

Galaxy Instant Hot Chocolate 100 x 25g

Hot Chocolate 100x

PRODUCT DESCRIPTION

Hot Chocolate Powdered Drink with Sugars and Sweetener 100 x 25g

Brand	Aimia Foods Ltd
Manufacturer Product Code	006ST25100
Product Type	Drink
Product Category	Tea & Coffee
Storage Type	Ambient
Erudus ID	8cf40a16b6904ab68bf70e9d3491b885
Specification Type	Legacy

Inner Component GTIN	5060113912701
Outer Case GTIN	05060113912749



INGREDIENTS

Ingredient Declaration

Whey Permeate (**MILK**), Sugar, Fat Reduced Cocoa Powder, Coconut Oil, Dried Glucose Syrup, Lactose (**MILK**), Milk Chocolate (3.0%) (sugar, cocoa butter, skimmed **MILK** powder, cocoa mass, lactose and protein from whey (**MILK**), palm fat, whey powder (**MILK**), **MILK** fat, emulsifier (**SOYA** lecithin), natural vanilla extract), Skimmed **MILK** Powder, Flavourings, Stabilisers (guar gum, E466, E340ii, E339ii, E452i), Low Sodium Salt (sea salt, potassium chloride, magnesium sulphate), Anti-Caking Agent (E551), **MILK** Proteins, Emulsifier (E471), Sweetener (E955).

ALLERGENS

Product Contains:

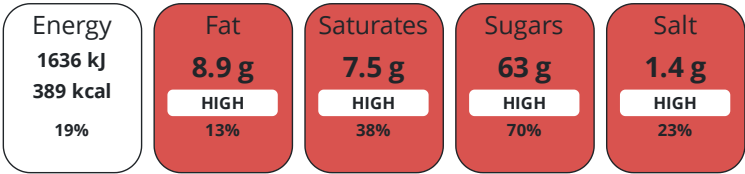
Celery/Celeriac	No	Mustard	No
Cereals Containing Gluten	No	Nuts (Tree)	No
Barley	No	Almond nuts	No
Oats	No	Brazil nuts	No
Rye	No	Cashew nuts	No
Wheat (including Spelt and Khorasan)	No	Hazelnuts	No
Gluten content <20ppm	Yes	Macadamia (Queensland) nuts	No
Crustacea	No	Pecan nuts	No
Eggs	No	Pistachio nuts	No
Fish	No	Walnuts	No
Lupin	No	Peanuts	No
Milk	Yes	Sesame Seeds	No
Molluscs	No	Soybeans	Yes
		Sulphur Dioxide and Sulphites	No

DIET
SUITABILITY

Suitable for Coeliacs	Yes	Halal Diet	No
Kosher Diet	No	Vegetarian Diet	Suitable for
Vegan Diet	No		

NUTRITIONAL
INFORMATION

Each 100g/ml portion contains:



of your reference intake.
Typical values per 100g/ml : Energy 389kcal / 1636kJ

Nutrient	per 100g/ml	RI per 100g/ml	per 25g/ml serving	RI per 25g/ml serving
Energy (kJ)	1636 kJ	19%	409 kJ	5%
Energy (kcal)	389 kcal	19%	97.3 kcal	5%
Fat	8.9 g	13%	2.2 g	3%
of which Saturates	7.5 g	38%	1.9 g	10%
Carbohydrate	70 g	27%	17.5 g	7%
of which Sugars	63 g	70%	15.8 g	18%
Protein	5 g	10%	1.3 g	3%
Salt	1.4 g	23%	0.4 g	7%

Serving Size25 g

HANDLING &
STORAGE
INFORMATION

Directions For Use
Empty the contents of the stick into a cup or mug and then pour on hot water and stir.

Storage Instructions
Store in a cool dry place

ORIGIN

Product Country of Origin/Place of Provenance
United Kingdom

Additional Origin Details

CONTACT
INFORMATION

N/A

Address
Aimia Foods Ltd
Penny Lane
Haydock
Merseyside
WA11 0QZ
England

Technical Contact
Duncan Evanson
Customer Quality Manager
duncan.evanson@aimiafoods.com

P: (Phone) 01942 272900

Complaints Contact
Louise Brown
Customer Services Manager
customer.services@aimiafoods.com

P: (Phone) 01942 408600

The information on the [Erudus System](#) has been supplied by the manufacturers of the products and, whilst the owners of the Erudus System take steps to ensure the information is regularly updated, they give no warranty and no guarantee that the information is accurate. Product information and ingredients may change, please always read product labels carefully in addition to using the information provided by Erudus.

