

Galaxy Instant Hot Chocolate Drink

Cocoa Powdered Drink With Milk Chocolate 6x1kg

PRODUCT DESCRIPTION

Hot Chocolate Powdered Drink

Brand	Aimia Foods Ltd
Manufacturer Product Code	0061KG
Product Type	Drink
Product Category	Hot Chocolate & Malted Drinks
Storage Type	Ambient
Erudus ID	c378ee1256d8431eb55603818c94799b
Specification Type	Drinks



Inner Component GTIN	5023471105512
Outer Case GTIN	5023471105529



INGREDIENTS

Ingredient Declaration
Sugar, Whey Permeate (MILK), Fat Reduced Cocoa Powder (8%), Coconut Oil, Dried Glucose Syrup, Milk Chocolate (3%) (sugar, cocoa butter, skimmed MILK powder, cocoa mass, lactose and protein from whey (MILK), palm fat, whey powder (MILK), MILK fat, emulsifier (SOYA lecithin), vanilla extract), Skimmed MILK Powder, Stabilisers: (guar gum, E466, E340ii, E339ii, E452i), Salt, Flavourings, Anti-Caking agent (E551), Acidity Regulator (E331), MILK Proteins, Emulsifiers (E471).

ALLERGENS

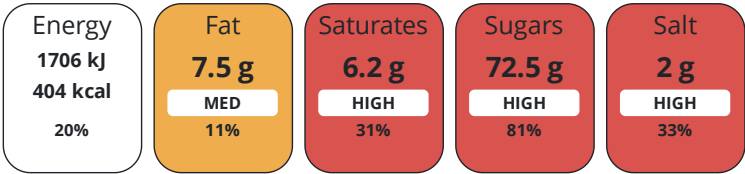
Product Contains:			
Celery/Celeriac	No	Mustard	No
Cereals Containing Gluten	No	Nuts (Tree)	No
Barley	No	Almond nuts	No
Oats	No	Brazil nuts	No
Rye	No	Cashew nuts	No
Wheat (including Spelt and Khorasan)	No	Hazelnuts	No
Crustacea	No	Macadamia (Queensland) nuts	No
Eggs	No	Pecan nuts	No
Fish	No	Pistachio nuts	No
Lupin	No	Walnuts	No
Milk	Yes	Peanuts	No
Molluscs	No	Sesame Seeds	No
		Soybeans	Yes
		Sulphur Dioxide and Sulphites	No

DIET SUITABILITY

Vegan Diet	No	Vegetarian Diet	Suitable for
Halal Diet	No	Kosher Diet	No

NUTRITIONAL
INFORMATION

Each 100g/ml portion contains:



of your reference intake.

Typical values per 100g/ml : Energy 404kcal / 1706kJ

Nutrient	per 100g	RI per 100g	per 25g serving	RI per 25g serving
Energy (kJ)	1706 kJ	20%	426.5 kJ	5%
Energy (kcal)	404 kcal	20%	101 kcal	5%
Fat	7.5 g	11%	1.9 g	3%
of which Saturates	6.2 g	31%	1.6 g	8%
Carbohydrate	78.9 g	30%	19.7 g	8%
of which Sugars	72.5 g	81%	18.1 g	20%
Protein	3.5 g	7%	0.9 g	2%
Salt	2 g	33%	0.5 g	8%

Serving Size	25 g
Number of Servings	40 Servings

HANDLING &
STORAGE
INFORMATION

Directions For Use
Just add 4 heaped teaspoons (25g) of Galaxy Instant Hot Chocolate Drink into a cup or mug and then pour on hot water and stir.

Storage Instructions
Store in a cool, dry place. May settle in transit.

ORIGIN

Product Country of Origin/Place of Provenance United Kingdom

CONTACT
INFORMATION

Additional Origin Details

N/A	Technical Contact
Address	Duncan Evanson
Aimia Foods Ltd	Customer Quality Manager
Penny Lane	duncan.evanson@aimiafoods.com
Haydock	
Merseyside	
WA11 0QZ	P: (Phone) 01942272900
England	

P: (Phone) 01942 272900

Complaints Contact

Louise Brown
Customer Services Manager
customer.services@aimiafoods.com

P: (Phone) 01942 408600

The information on the [Erudus System](#) has been supplied by the manufacturers of the products and, whilst the owners of the Erudus System take steps to ensure the information is regularly updated, they give no warranty and no guarantee that the information is accurate. Product information and ingredients may change, please always read product labels carefully in addition to using the information provided by Erudus.

