

Walkers Ready Salted Crisps 32.5g x 32

Walkers Ready Salted Crisps 32.5g 32x32.5g

PRODUCT DESCRIPTION

Walkers Crisps Ready Salted 32.5g

Brand	Walkers Snacks Limited (PepsiCo)
Manufacturer Product Code	300000420
Product Type	Food
Product Category	Crisps & Snacks
Storage Type	Ambient
Erudus ID	868f0b46e8124d51994c2c3ee1820e52
Specification Type	Legacy



Inner Component GTIN	05000328347790
Outer Case GTIN	05000328558394



INGREDIENTS

Ingredient Declaration

Potatoes, Vegetable Oils (Sunflower, Rapeseed, in varying proportions), Salt, Antioxidants (Rosemary Extract, Ascorbic Acid, Tocopherol Rich Extract, Citric Acid).

ALLERGENS

Product Contains:

Celery/Celeriac	May Contain
Cereals Containing Gluten	May Contain
Barley	May Contain
Oats	No
Rye	No
Wheat (including Spelt and Khorasan)	May Contain
Crustacea	No
Eggs	No
Fish	No
Lupin	No
Milk	May Contain
Molluscs	No

Mustard	May Contain
Nuts (Tree)	No
Almond nuts	No
Brazil nuts	No
Cashew nuts	No
Hazelnuts	No
Macadamia (Queensland) nuts	No
Pecan nuts	No
Pistachio nuts	No
Walnuts	No
Peanuts	No
Sesame Seeds	No
Soybeans	May Contain
Sulphur Dioxide and Sulphites	No

Risk Source:

Additional Allergen Information

May Contain: Barley, Celery, Cereals Containing Gluten, Milk, Mustard, Soya, Wheat

SUPPLEMENTARY INGREDIENT INFORMATION

Hydrogenated Vegetable Oil/Fat	Yes
GM Protein/DNA	No

ADDITIVES

Product Contains:

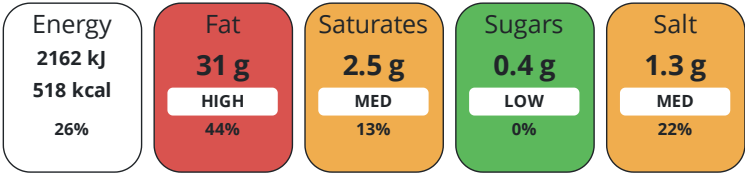
Artificial Antioxidants	Yes
Artificial Colours	No

DIET
SUITABILITY

Suitable for Coeliacs	No	Halal Diet	No
Kosher Diet	No	Vegetarian Diet	Suitable for
Vegan Diet	No		

NUTRITIONAL
INFORMATION

Each 100g/ml portion contains:



of your reference intake.

Typical values per 100g/ml : Energy 518kcal / 2162kJ

Nutrient	per 100g/ml	RI per 100g/ml
Energy (kJ)	2162 kJ	26%
Energy (kcal)	518 kcal	26%
Fat	31 g	44%
of which Saturates	2.5 g	13%
Carbohydrate	52 g	20%
of which Sugars	0.4 g	0%
Fibre	3.9 g	
Protein	6.4 g	13%
Salt	1.3 g	22%

SUPPLEMENTARY
NUTRITIONAL
INFORMATION

HFSS (HIGH IN
FAT, SALT AND
SUGAR)
HANDLING &
STORAGE
INFORMATION

HFSS Status	Yes
Directions For Use	This pack contains 1 serving
Storage Instructions	Store in a cool dry place
Shelf Life from Time of Production	112 Days

ORIGIN

Product Country of Origin/Place of Provenance	United Kingdom
---	----------------

PRODUCT
CHARACTERISTICS
CONFIGURATION

Standards Testing	
Case Configuration	Inner Pack Configuration
Total Quantity of Inner Components in Outer Case	32 Units

PRODUCT WEIGHTS

Inner Component	
Variable Weight Consumer Item	No
Inner Component Weight	32.5 g
Outer Case	
Outer Case Gross Weight	1.09 kg
Outer Case Net Weight	1.04 kg

PRODUCT DIMENSIONS

Inner Component	
Inner Component Depth	400 mm
Inner Component Width	133 mm
Inner Component Height	195 mm
Outer Case	
Outer Case Depth	40 mm
Outer Case Width	133 mm
Outer Case Height	195 mm

PALLET INFORMATION

Quantity of Cases Per Pallet Layer	10 Cases
Quantity of Layers Per Pallet	10 Layers
Quantity of Cases Per Pallet	100 Cases

Pallet Height	2.28 MTR
Pallet Gross Weight	135.91 kg

OTHER INFORMATION CONTACT INFORMATION

Address
Walkers Snacks Limited (PepsiCo)
450 South Oak Way
Green Park
Reading
RG2 6UW
United Kingdom

P: (Phone) 07824608485

Commercial Contact
Jennifer Brown
eCommerce Content Manager
Jennifer.Brown@pepsico.com

The information on the [Erudus System](#) has been supplied by the manufacturers of the products and, whilst the owners of the Erudus System take steps to ensure the information is regularly updated, they give no warranty and no guarantee that the information is accurate. Product information and ingredients may change, please always read product labels carefully in addition to using the information provided by Erudus.

We do not accept liability for any inaccuracies or incorrect information contained on this site.
Please visit <http://www.erudus.com/terms-and-conditions> for full terms and conditions.