

# TWIX 5x32x50g Std GB IE

Twix Chocolate Biscuit Twin Bar 50g 160x0.05kg

PRODUCT DESCRIPTION

Confectionery Bar

Brand	Mars
Manufacturer Product Code	462930
Product Type	Food
Product Category	Confectionery
Storage Type	Ambient
Erudus ID	f8b5d7831b2e4836b6a4e6f946e30cec
Specification Type	Generic
Inner Component GTIN	5900951313592
Outer Case GTIN	05000159559676



INGREDIENTS

Ingredient Declaration

Sugar, Glucose Syrup, WHEAT Flour, Palm Fat, Skimmed MILK Powder, Cocoa Butter, Cocoa Mass, Whey Permeate (MILK), MILK Fat, Fat-Reduced Cocoa Powder, Salt, Emulsifier (SOYA Lecithin), Raising Agent (E500), Flavouring

ALLERGENS

Product Contains:

Celery/Celeriac	No
Cereals Containing Gluten	Yes
Barley	No
Oats	No
Rye	No
Wheat (including Spelt and Khorasan)	Yes
Crustacea	No
Eggs	No
Fish	No
Lupin	No
Milk	Yes
Molluscs	No

Mustard	No
Nuts (Tree)	May Contain
Almond nuts	May Contain
Brazil nuts	May Contain
Cashew nuts	May Contain
Hazelnuts	May Contain
Macadamia (Queensland) nuts	May Contain
Pecan nuts	May Contain
Pistachio nuts	May Contain
Walnuts	May Contain
Peanuts	No
Sesame Seeds	No
Soybeans	Yes
Sulphur Dioxide and Sulphites	No

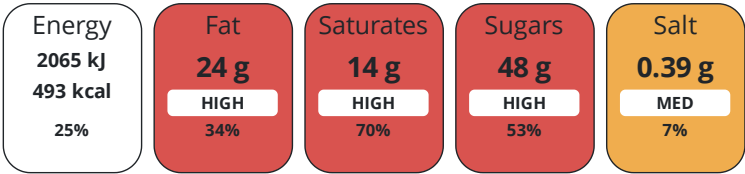
Risk Source:

SUPPLEMENTARY  
INGREDIENT  
INFORMATION  
ADDITIVES

GM Protein/DNA	No
Product Contains:	

NUTRITIONAL  
INFORMATION

Each 100g/ml portion contains:



of your reference intake.

Typical values per 100g/ml : Energy 493kcal / 2065kJ

Nutrient	per 100g	RI per 100g
Energy (kJ)	2065 kJ	25%
Energy (kcal)	493 kcal	25%
Fat	24 g	34%
of which Saturates	14 g	70%
Carbohydrate	65 g	25%
of which Sugars	48 g	53%
Protein	4.6 g	9%
Salt	0.39 g	7%

SUPPLEMENTARY  
NUTRITIONAL  
INFORMATION

HANDLING &  
STORAGE  
INFORMATION

Directions For Use

Ready to eat

Storage Instructions

Keep cool and dry

Shelf Life from Time of Production	217 Days
------------------------------------	----------

ORIGIN

Product Country of Origin/Place of Provenance	Netherlands (the)
---	-------------------

PRODUCT  
CHARACTERISTICS  
CONFIGURATION

Standards Testing	
Case Configuration	Inner Pack Configuration
Total Quantity of Inner Components in Outer Case	160 Units

PRODUCT  
WEIGHTS

Inner Component	
Variable Weight Consumer Item	No
Inner Component Weight	0.05 kg
Outer Case	
Outer Case Gross Weight	8.98 kg
Outer Case Net Weight	8 kg

PRODUCT  
DIMENSIONS

Inner Component	
Inner Component Depth	0 mm
Inner Component Width	0 mm
Inner Component Height	0 mm
Outer Case	
Outer Case Depth	384 mm
Outer Case Width	261 mm
Outer Case Height	212 mm

PALLET  
INFORMATION

Quantity of Cases Per Pallet Layer	10 Cases	Pallet Height	1.65 MTR
Quantity of Layers Per Pallet	7 Layers	Pallet Gross Weight	658.46 kg
Quantity of Cases Per Pallet	70 Cases		

OTHER  
INFORMATION  
CONTACT  
INFORMATION

Address  
Mars  
3d Dundee Road  
Slough  
SL1 4LG  
United Kingdom

The information on the [Erudus System](#) has been supplied by the manufacturers of the products and, whilst the owners of the Erudus System take steps to ensure the information is regularly updated, they give no warranty and no guarantee that the information is accurate. Product information and ingredients may change, please always read product labels carefully in addition to using the information provided by Erudus.

We do not accept liability for any inaccuracies or incorrect information contained on this site.  
Please visit <http://www.erudus.com/terms-and-conditions> for full terms and conditions.