

H24034 – The Christmas Eve Gift Box

Gluten	Soya	Peanuts	Nuts	Sesame	Lupin	Milk	Eggs	Sulphites	Celery	Mustard	Fish	Molluscs	Crustacean
Mandatory allergens contains:													
✓	✓	✓	✓	✓		✓	✓	✓	z	z			
Key													
✓	Listed in ingredients												
z	May contain traces												

Product Name: Domaine Boyar Deer Point Cabernet Sauvignon 75cl (12.5% ABV)

Ingredients: N/A

Allergens: Contains **SULPHITES**.

Storage: Store in a cool, dry place.

Typical Value per 100g

Energy (kj):	N/A
Energy (kcal):	N/A
Fat (g):	N/A
Fat of which saturates (g):	N/A
Carbohydrate (g):	N/A
Carbohydrate of which sugars (g):	N/A
Protein (g):	N/A
Salt (g):	N/A

Product Name: Domaine Boyar Deer Point Sauvignon Blanc 75cl (12% ABV)

Ingredients: N/A

Allergens: Contains **SULPHITES**.

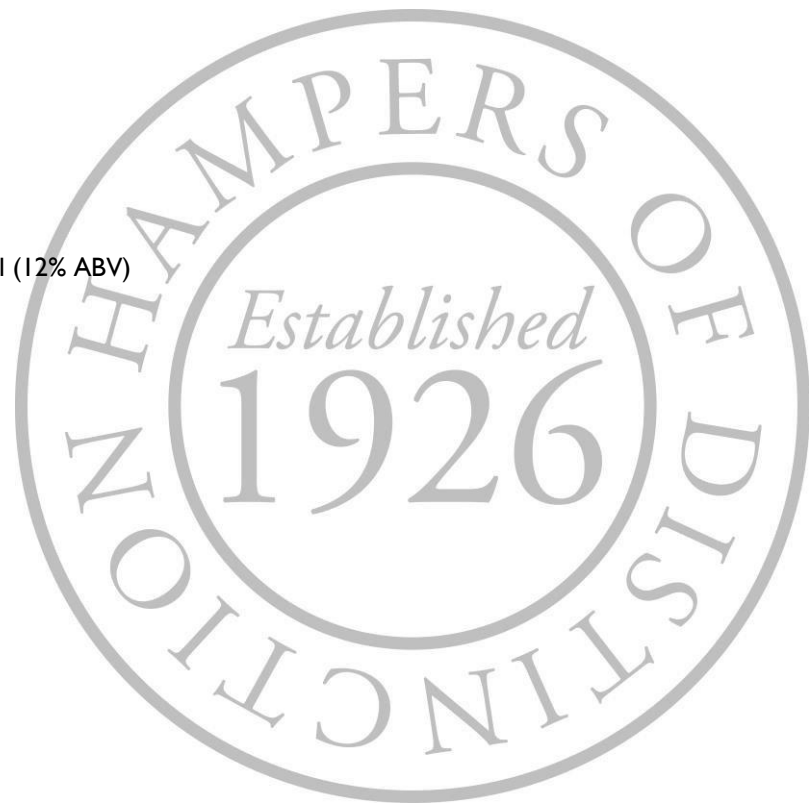
Storage: Store in a cool, dry place.

Typical Value per 100g

Energy (kj):	N/A
Energy (kcal):	N/A
Fat (g):	N/A
Fat of which saturates (g):	N/A
Carbohydrate (g):	N/A
Carbohydrate of which sugars (g):	N/A
Protein (g):	N/A
Salt (g):	N/A

Product Name: Bottega Spa Casa Bottega Prosecco DOC 75cl (11% ABV)

Ingredients: N/A



Allergens: Contains **SULPHITES**.

Storage: Store in a cool, dry place.

Typical Value per 100g

Energy (kj):	N/A
Energy (kcal):	N/A
Fat (g):	N/A
Fat of which saturates (g):	N/A
Carbohydrate (g):	N/A
Carbohydrate of which sugars (g):	N/A
Protein (g):	N/A
Salt (g):	N/A

Product Name: Grandma Wild's 4 Traditional Mince Pies

Ingredients: Mincemeat (55%) [Sugar, Vine Fruits (28%) (Sunflower Oil), Apple Puree (Preservative: Acetic Acid), Candied Mixed Peel (4%) (Orange Peel, Glucose Fructose Syrup, Sugar, Lemon Peel, Acidity Regulator: Citric Acid), Water, Vegetable Suet (Palm Oil, Rice Flour, Sunflower Oil) Humectant: Vegetable Glycerine, Modified Maize Starch, Mixed Spice, Roast **BARLEY** Malt Extract, Salt, Lemon Oil], **WHEAT** Flour (**WHEAT** Flour, Calcium Carbonate, Iron, Niacin, Thiamin), Vegetable Oil (Palm, Rapeseed, Water, Salt, Natural Flavouring), Sugar, Maize Starch, Invert Sugar Syrup.

Allergens: For allergens, see ingredients in **CAPITALS**. Not suitable for **NUT** and **SESAME** allergy sufferers: may also contain **EGG, MILK, MUSTARD, SOYA, PEANUT** and other **GLUTEN** sources (**OAT, SPELT, RYE**).

Storage: Store in a cool, dry place.

Typical Value per 100g

Energy (kj):	1679
Energy (kcal):	399
Fat (g):	15
Fat of which saturates (g):	6
Carbohydrate (g):	64
Carbohydrate of which sugars (g):	36
Protein (g):	2.8
Salt (g):	0.18

Product Name: Cole's Classic Christmas Pudding 112g

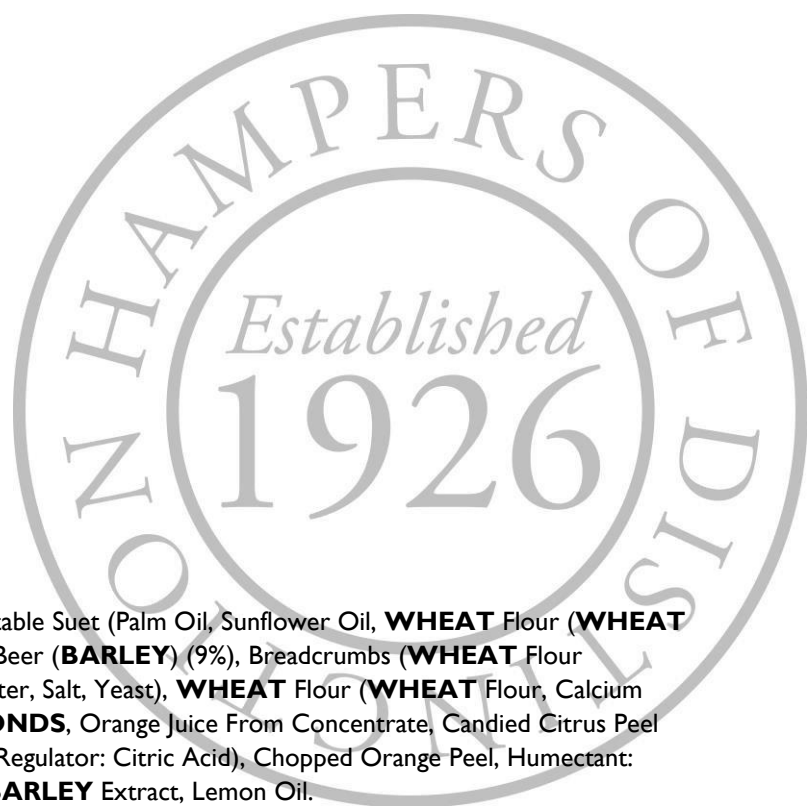
Ingredients: Vine Fruits (41%) (Sultanas, Raisins, Currants), Vegetable Suet (Palm Oil, Sunflower Oil, **WHEAT** Flour (**WHEAT** Flour, Calcium Carbonate, Iron, Niacin, Thiamine)), Brown Sugar, Beer (**BARLEY**) (9%), Breadcrumbs (**WHEAT** Flour (**WHEAT** Flour, Calcium Carbonate, Iron, Niacin, Thiamine), Water, Salt, Yeast), **WHEAT** Flour (**WHEAT** Flour, Calcium Carbonate, Iron, Niacin, Thiamine), Golden Syrup, Ground **ALMONDS**, Orange Juice From Concentrate, Candied Citrus Peel (Orange Peel, Lemon Peel, Glucose - Fructose Syrup, Salt, Acidity Regulator: Citric Acid), Chopped Orange Peel, Humectant: Vegetable Glycerol, Lemon Juice From Concentrate, Salt, Malted **BARLEY** Extract, Lemon Oil.

Allergens: For allergens, see ingredients in **CAPITALS**.

Storage: Store in a cool, dry place.

Typical Value per 100g

Energy (kj):	1466
---------------------	------



Energy (kcal):	349
Fat (g):	12
Fat of which saturates (g):	5.8
Carbohydrate (g):	54
Carbohydrate of which sugars (g):	44
Protein (g):	3.3
Salt (g):	0.63

Product Name: Hamlet Deluxe Collection 175g

Ingredients: Assorted Chocolates with 36% Filling (21% Caramel Filling, 8% **HAZELNUT** Filling, 7% Raspberry Filling). Sugar, Whole **MILK** Powder, Glucose Syrup, Cocoa Butter, Cocoa Mass, Vegetable Oils (Palm, Rapeseed) In Varying Proportions, Sweetened Condensed Skimmed **MILK, HAZELNUTS** 2.8%, Coconut Fat, Flavours: Vanilla and Raspberry, Butter Oil (**MILK**), Emulsifiers: Lecithins (Incl. **SOY**) And E471, Salt.

Allergens: For allergens, see ingredients in **CAPITALS**.

Storage: Store in a cool, dry place.

Typical Value per 100g

Energy (kj):	2200
Energy (kcal):	527
Fat (g):	32
Fat of which saturates (g):	18
Carbohydrate (g):	54
Carbohydrate of which sugars (g):	48
Protein (g):	5.6
Salt (g):	0.2

Product Name: Buiteman Cheddar Biscuits 75g

Ingredients: **WHEAT** Flour (**GLUTEN**), Vegetable Oils (Rapeseed, Palm), Matured Cheddar Cheese 22% (**MILK**, Potato Starch, Salt, Starter Culture, Vegetarian Rennet), Barn **EGG**, Yeast, Dried **MILK**, Salt, Sugar, Emulsifier: E471, Spices, Yeast Extract, Colour: Paprika Extract, Acidity Regulator: Citric Acid, Natural Flavouring.

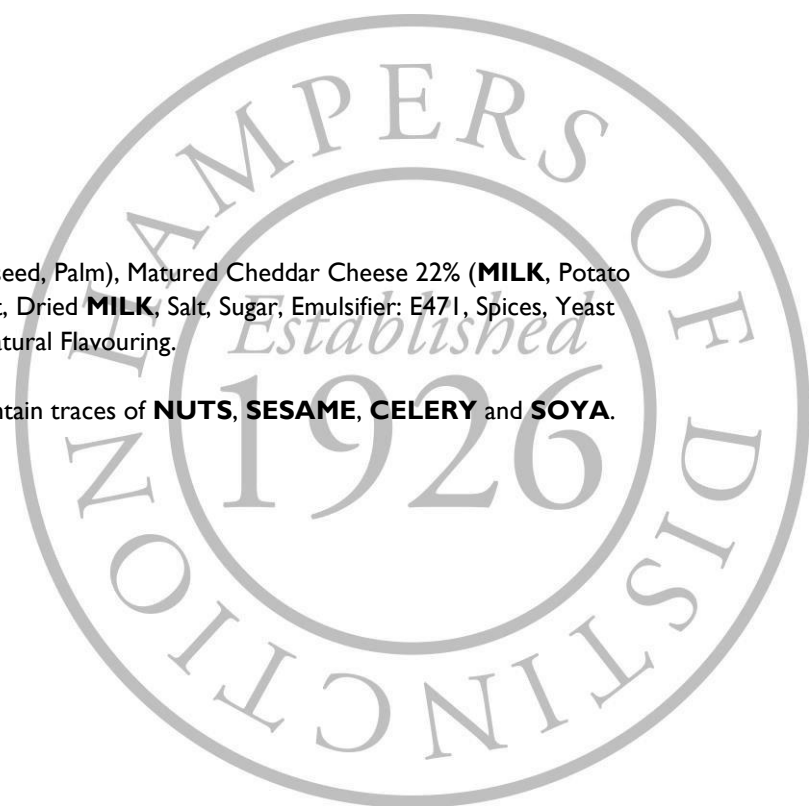
Allergens: For allergens, see ingredients in **CAPITALS**. May contain traces of **NUTS, SESAME, CELERY** and **SOYA**.

Storage: Store in a cool, dry place.

Typical Value per 100g

Energy (kj):	2283
Energy (kcal):	548
Fat (g):	35
Fat of which saturates (g):	15
Carbohydrate (g):	44
Carbohydrate of which sugars (g):	0.9
Protein (g):	13
Salt (g):	2.4

Product Name: Bon Bons All Butter Fudge 150g



Ingredients: Sugar, Salted Butter (16%) (**MILK**, Salt), Sweetened Condensed **MILK** (**MILK**, Sugar), Glucose Syrup, Golden Syrup.

Allergens: For allergens, see ingredients in **CAPITALS**. May contain traces of **NUTS**, **PEANUTS** and **WHEAT**.

Storage: Store in a cool, dry place. Once opened store in an airtight container.

Typical Value per 100g

Energy (kj):	1908
Energy (kcal):	454
Fat (g):	16
Fat of which saturates (g):	11
Carbohydrate (g):	77
Carbohydrate of which sugars (g):	71
Protein (g):	1.2
Salt (g):	0.3

Product Name: Brown Bag Oak Smoked Chilli Crisps 150g

Ingredients: Potatoes, Rapeseed Oil, Seasoning (8%) (Oak Smoked Sugar, Sea Salt, Sugar, Garlic Powder, Rice Flour, Onion Powder, Cumin, Tomato Powder, Chilli, Scotch Bonnet Chilli, Oak Smoked Salt, Yeast Extract Powder, Natural Flavourings, Acid: Citric Acid, Paprika Extract).

Allergens: For allergens, see ingredients in **CAPITALS**.

Storage: Store in a cool, dry place.

Typical Value per 100g

Energy (kj):	2078
Energy (kcal):	497
Fat (g):	26.8
Fat of which saturates (g):	2.3
Carbohydrate (g):	58.9
Carbohydrate of which sugars (g):	3.4
Protein (g):	5.2
Salt (g):	1.9

Product Name: Mr Filberts Rose Harissa Peanuts 75g

Ingredients: **PEANUTS** (91%), Sugar, Rose Harissa (2%) [Rehydrated Red Peppers, Sunflower Oil, Spices, Garlic, Salt, Rose Petals, Acidity Regulator: Citric Acid], Salt, Black Pepper, Garlic Powder, Rapeseed Oil.

Allergens: For allergens, see ingredients in **CAPITALS**. May contain other **NUTS**.

Storage: Store in a cool, dry place.

Typical Value per 100g

Energy (kj):	2623
Energy (kcal):	633
Fat (g):	52
Fat of which saturates (g):	6.8
Carbohydrate (g):	12



Carbohydrate of which sugars (g):	7.2
Protein (g):	27
Salt (g):	0.9

Product Name: Mighty Fine Gingerbread Milk Chocolate Honeycomb 180g

Ingredients: **MILK** Chocolate (36%) (Sugar, Cocoa Butter, Whole **MILK** Powder, Cocoa Mass, Emulsifier: **SOYA** Lecithin, Flavourings), Sugar, Glucose Syrup, Honey (1%), Raising Agent: Sodium Bicarbonate, Salt.

Allergens: For allergens, see ingredients in **CAPITALS**. May contain **MILK, PEANUTS**, and other **NUTS**.

Storage: Store in a cool, dry place out of direct sunlight.

Typical Value per 100g

Energy (kj):	1840
Energy (kcal):	437
Fat (g):	12.4
Fat of which saturates (g):	7.5
Carbohydrate (g):	78.5
Carbohydrate of which sugars (g):	63.1
Protein (g):	2.8
Salt (g):	1.43

Product Name: Anna's Ginger Thins 150g

Ingredients: **WHEAT** Flour, Sugar, Vegetable Oils (Palm, Rapeseed, Coconut), Sugar Syrup, Salt, Raising Agent (Sodium Hydrogen Carbonate), Cinnamon, Salt, Ginger 0.3%, Cloves.

Allergens: For allergens, see ingredients in **CAPITALS**. May contain traces of **ALMOND**.

Storage: Store in a cool dry place, avoiding direct sunlight.

Typical Value per 100g

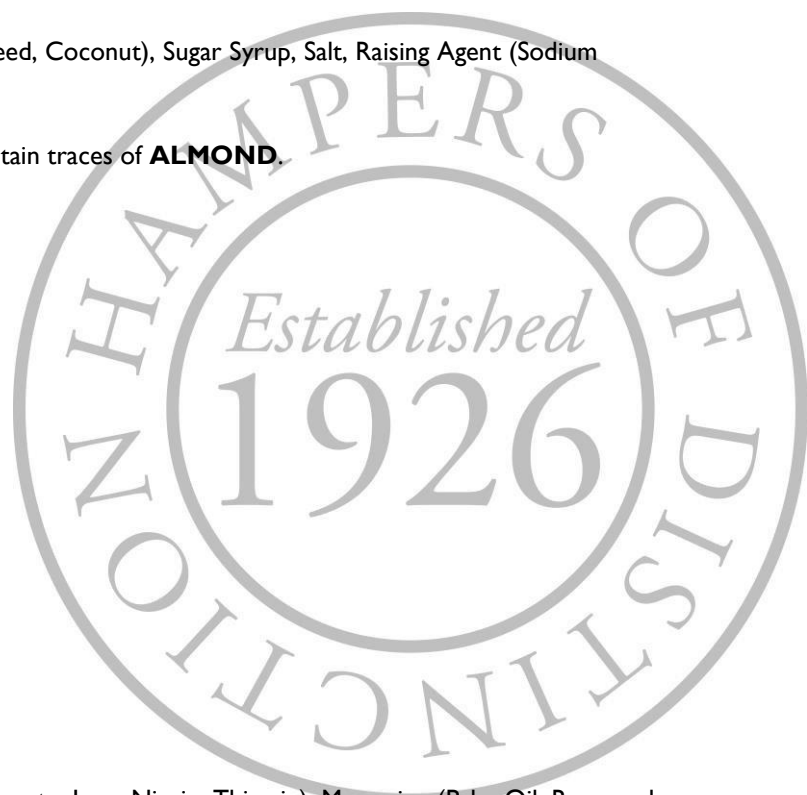
Energy (kj):	1979
Energy (kcal):	471
Fat (g):	19
Fat of which saturates (g):	9
Carbohydrate (g):	70
Carbohydrate of which sugars (g):	33
Protein (g):	5.4
Salt (g):	1.19

Product Name: Hebridean Baker Mixed Berry Oatie 150g

Ingredients: Oats (29.1%), Sugar, **WHEAT** Flour (Calcium Carbonate, Iron, Niacin, Thiamin), Margarine (Palm Oil, Rapeseed Oil, Water, Salt, Emulsifier: E475, Colour E100; E160b, Flavourings), Butter (**MILK**), Cornflour, Raising Agents: E450i; E500ii, Skimmed **MILK** Powder, Water, Blackcurrants (1%), Raspberries (0.8%), Blueberries (0.6%), Salt.

Allergens: For allergens, see ingredients in **CAPITALS**. May contains **CELERY, EGGS, MUSTARD, NUTS, SESAME, SOYA**.

Storage: Once opened, store in an airtight container in a cool, dry place.



Typical Value per 100g

Energy (kj):	2252
Energy (kcal):	538
Fat (g):	26.4
Fat of which saturates (g):	11.4
Carbohydrate (g):	66.5
Carbohydrate of which sugars (g):	27.7
Protein (g):	6.5
Salt (g):	2.3

Product Name: Cartwright & Butler Tomato & Basil Seeded Flatbreads 130g

Ingredients: **WHEAT** Flour (43%), Water, Whole Grain **RYE** Flour (9%), **RYE** Bran, Yeast, Rapeseed Oil, Dried Tomato (3%), Linseeds, **SESAME** Seeds, Sugar, Sea Salt, Dried Basil (0.7%).

Allergens: For allergens, see ingredients in **CAPITALS**. May also contain traces of **MILK** and **NUTS**.

Storage: Once opened store in a cool, dry place away from direct sunlight in an airtight container.

Typical Value per 100g

Energy (kj):	1654
Energy (kcal):	393
Fat (g):	9.5
Fat of which saturates (g):	1.1
Carbohydrate (g):	57.7
Carbohydrate of which sugars (g):	5.2
Protein (g):	13.9
Salt (g):	1.7

Product Name: Original Cake Co. Iced Cake Slab 400g

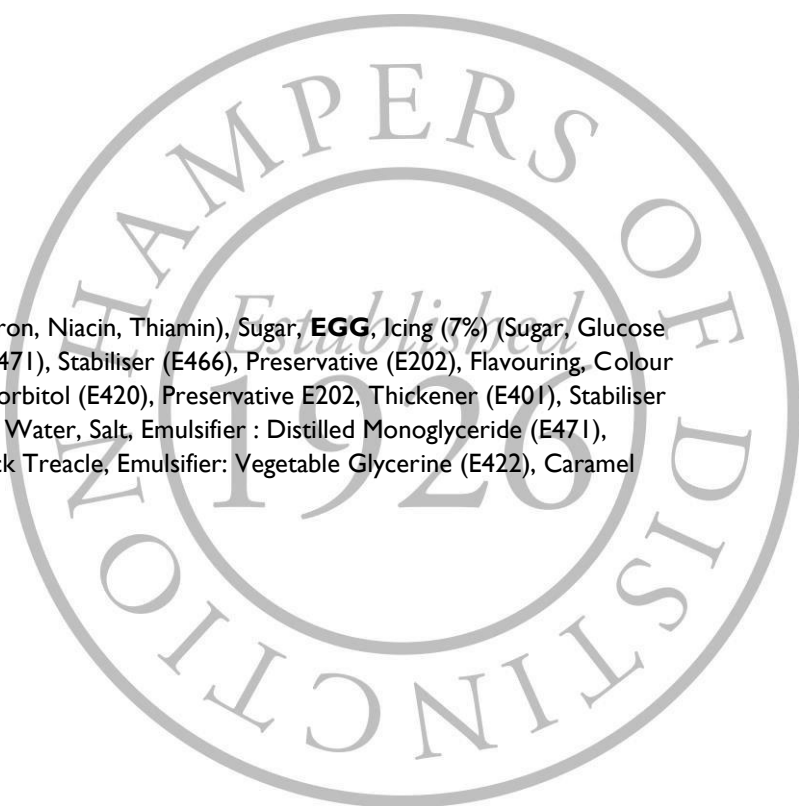
Ingredients: Sultanas (46%), **WHEAT** Flour (Contains Calcium, Iron, Niacin, Thiamin), Sugar, **EGG**, Icing (7%) (Sugar, Glucose Syrup, Palm Oil, Water, Humectant: Glycerine (E422), Emulsifier (E471), Stabiliser (E466), Preservative (E202), Flavouring, Colour (E171)), Marzipan (7%) (Sugar, **ALMONDS**, Corn Syrup, Water, Sorbitol (E420), Preservative E202, Thickener (E401), Stabiliser (Invertase)) [**NUTS**], Margarine (Vegetable Oil (Palm & Rapeseed), Water, Salt, Emulsifier : Distilled Monoglyceride (E471), Flavouring, Colouring (E160b, E100)), Butter [**MILK**], Glucose, Black Treacle, Emulsifier: Vegetable Glycerine (E422), Caramel Colour E150c, Raising Agents: E500, E450 [**WHEAT**].

Allergens: For allergens, see ingredients in **CAPITALS**.

Storage: Store in a cool, dry place out of direct sunlight.

Typical Value per 100g

Energy (kj):	1588
Energy (kcal):	377
Fat (g):	9
Fat of which saturates (g):	3.9
Carbohydrate (g):	69
Carbohydrate of which sugars (g):	58
Protein (g):	4.1
Salt (g):	0.19



Product Name: Mrs Darlington's Strawberry Extra Jam 340g

Ingredients: Sugar, Strawberries, Gelling Agent: Pectin, Lemon Juice. Prepared with 50 grams of fruit per 100 grams.

Allergens: For allergens, see ingredients in **CAPITALS**.

Storage: Store in a cool, dry place. Once opened refrigerate.

Typical Value per 100g

Energy (kj):	1042
Energy (kcal):	245
Fat (g):	0.2
Fat of which saturates (g):	0
Carbohydrate (g):	60.7
Carbohydrate of which sugars (g):	60.5
Protein (g):	0.3
Salt (g):	0

Product Name: Elizabeth Shaw Milk Cinnamon Stars 125g

Ingredients: Sugar, Cocoa Mass, Whole **MILK** Powder, Cocoa Butter, Anhydrous **MILK** Fat, **WHEAT** Starch, Emulsifier: **SOYA** Lecithin, Cinnamon, Natural Cinnamon Flavouring, Glucose Syrup, Natural Colours: Carrot, Safflower and Spirulina Extracts, Natural Vanilla Flavouring, Vegetable Oil (Coconut), Glazing Agent: Beeswax. **MILK** Chocolate contains: Cocoa Solids 32% min; **MILK** Solids 14% min.

Allergens: For allergens, see ingredients in **CAPITALS**. Also, may contain **PEANUTS** and **NUTS**.

Storage: Store in a cool, dry place.

Typical Value per 100g

Energy (kj):	2214
Energy (kcal):	530
Fat (g):	30
Fat of which saturates (g):	19
Carbohydrate (g):	58
Carbohydrate of which sugars (g):	56
Protein (g):	5.6
Salt (g):	0.10

Product Name: Love Popcorn Caramelised Biscuit Crumb 100g

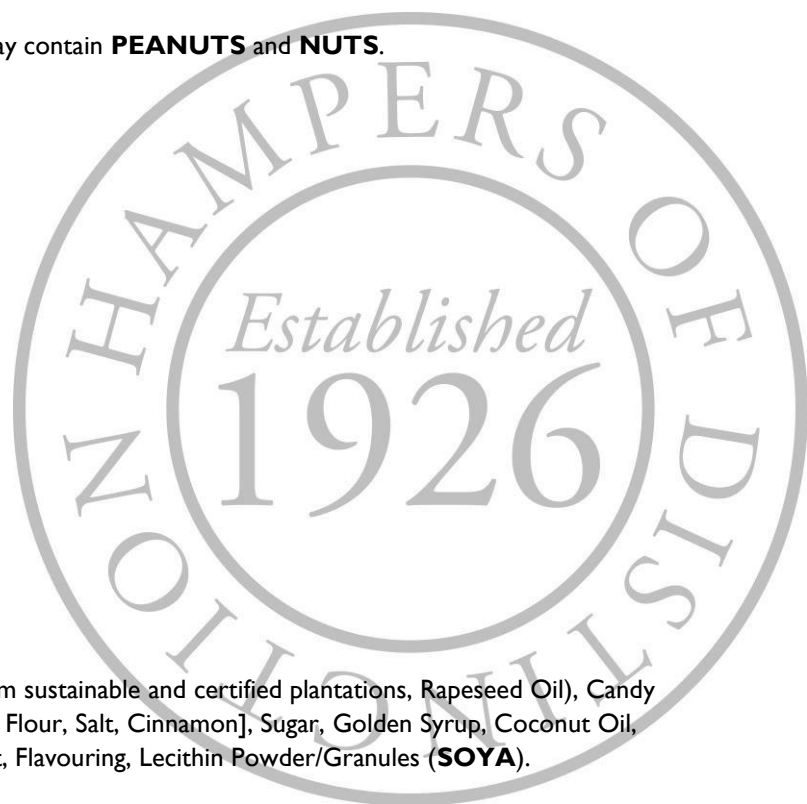
Ingredients: **WHEAT** Flour, Sugar, Vegetable Oils (Palm Oil from sustainable and certified plantations, Rapeseed Oil), Candy Sugar Syrup, Raising Agent (Sodium Hydrogen Carbonate), **SOYA** Flour, Salt, Cinnamon], Sugar, Golden Syrup, Coconut Oil, Glucose Syrup, Ground Cinnamon, Rapeseed Oil, Baking Soda, Salt, Flavouring, Lecithin Powder/Granules (**SOYA**).

Allergens: For allergens, see ingredients in **CAPITALS**.

Storage: Store in a cool, dry place.

Typical Value per 100g

Energy (kj):	1847
Energy (kcal):	439



Fat (g):	14
Fat of which saturates (g):	8.1
Carbohydrate (g):	72
Carbohydrate of which sugars (g):	44
Protein (g):	4.4
Salt (g):	1.4

