

Green & Black's Organic The Miniature Bar Collection Chocolate Bar 180g



EAN
07622210216861

Target market(s)
GB, IE

Components

Ingredients

Cocoa mass #, cane sugar #, cocoa butter #, whole **MILK** powder #, chopped roasted **ALMONDS** #, crystallised ginger # (stem ginger #, icing sugar #), currants #, chopped roasted **HAZELNUTS** #, glucose syrup #, **BUTTER** #, emulsifier (**SOYA** lecithins #), palm oil #, molasses #, vanilla extract #. # Certified Organic. ORGANIC CHOCOLATE: MINIMUM COCOA SOLIDS 70%. ORGANIC CHOCOLATE: MINIMUM COCOA SOLIDS 60%. ORGANIC MILK CHOCOLATE: MINIMUM COCOA SOLIDS 37%. MINIMUM MILK SOLIDS 24%. Fairtrade Cocoa, Sugar, Ginger, Molasses and Vanilla may be mixed with non-certified Cocoa, Sugar, Ginger, Molasses and Vanilla on a mass balance basis, total 80%. Visit info.fairtrade.net/sourcing

Allergen Tag Text

For allergens see ingredients in Bold

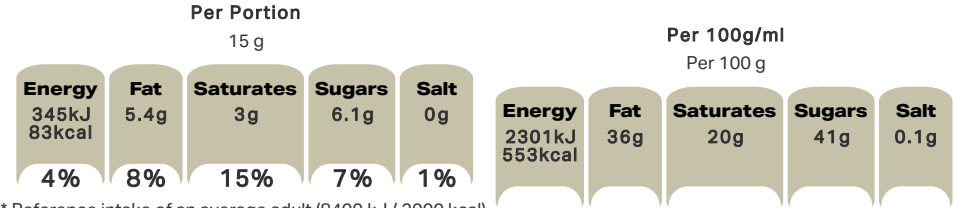
Nutrition

	per 100g	15 g	% 15 g
Energy	2301 kJ	345 kJ	4 %
	553 kcal	83kcal	4 %
Total Fat	36.00 g	5.40 g	8 %
Saturated Fat	20.00 g	3.00 g	15 %
Available Carbohydrate	45.00 g	6.70 g	3 %
Total Sugars	41.00 g	6.10 g	7 %
Dietary Fiber (EC definition)	5.90 g	0.90 g	
Protein	8.90 g	1.30 g	3 %
Equivalent As Salt *to Sodium	0.10 g	0.02 g	1 %

Calculated Nutrition

	per 100g	15 g
Energy (kJ)	2301	345
Energy (kcal)	553	83
Fat (g)	36	5.4
of which saturates (g)	20	3
Carbohydrate (g)	45	6.7
of which sugars (g)	41	6.1
Fibre (g)	5.9	0.9
Protein (g)	8.9	1.3
Salt (g)	0.1	0.02

Front of Pack Nutrition



* Reference intake of an average adult (8400 kJ / 2000 kcal).

Nutrition Other Text

e 180 g

Reference Intake Statement

Reference Intake Statement - * Reference intake of an average adult (8400 kJ / 2000 kcal).

HFSS Indicator

HFSS Indicator - HFSS

Product Description

Alternative Description

Supplied Description - Green & Black's Organic Classic Miniature Chocolate Bar Collection 180g

Brand

Green & Black's Organic

Standardised Brand

Brand - Green & Black's Organic

Sub Brand

Sub Brand - The Miniature Bar Collection

Regulated Product Name

12 Miniature Bars Of Dark & Milk Chocolate.

Marketing

Company Name

Mondelez UK

Company Address

Cadbury House Sanderson Road Uxbridge UB8 1DH

Product Marketing

We put all of our signature dark and milk chocolate bars together so you or your friends could experience the spectrum of our flavours.From our balanced, bittersweet dark chocolate with Hazelnut and Currants and fiery ginger to the crunchy satisfaction of Almond and Butterscotch.Containing 12 miniature bars of milk and dark chocolate, the collection makes the perfect gift, or you can share it amongst the whole family as a celebratory sweet treat.We buy direct our Fairtrade beans, at a fair price, predominantly from cocoa farmers in Dominican Republic who use organic farming techniques
Suitable for vegetarians

Health & Lifestyle

Allergy Advice

Almonds - Contains
Hazelnuts - Contains
Milk - Contains
Soya - Contains

Storage & Usage

Storage Type

Type
Ambient

Storage

Store in a dry place. Protect from heat.

Brandbank Captured Pack Data

Pack Size

180g

Numeric Size

Numeric Size - 180

Country

Country of Origin - Poland

Pack Type

Type - Box

Usage Other Text

GB/IE: 12 x 15g Bars per Box.

Customer Supplied Pack Data

Supplied Dimension

Shelf Height (mm)	Shelf Width (mm)	Shelf Depth (mm)
88	228	22

(GS1 package measurement rules)

Supplied Weight

Gross Weight - 209

Supplied Case

GTIN - 07622210216854

Height - 194

Width - 165

Depth - 245

Weight - 2690

Unit Count - 12

Customer Services

Manufacturers Address

Cadbury House Sanderson Road Uxbridge UB8 1DH

Return To

We are passionate about our great quality Cadbury products. Not completely satisfied? Please contact us: Freephone 0800 818181 (UK only).

Mondelez UK,

PO Box 7008,

Birmingham,

B30 2PT.

Mondelez Ireland,

Freephone 1-800 678708

Malahide Road,

Coolock,

Dublin 5.

Extended Data

Description Breakdown

Functional Name - Chocolate Bar

