

KitKat Salted Caramel 99g



EAN
3800020492864

Target market(s)
GB, IE

Components

Ingredients

- Sugar
- Vegetable Fats (Palm, Shea)
- Skimmed **MILK** Powder
- WHEAT** Flour
- Cocoa Butter
- Coco Mass
- Whey Powder Product (**MILK**)
- Glucose Syrup
- Butterfat (**MILK**)
- Fat-Reduced Cocoa Powder
- Emulsifier (Lecithins)
- Whey Powder (**MILK**)
- Salt
- Butter (**MILK**)
- Natural Flavouring
- Raising Agent (Sodium Bicarbonate)
- Paprika Extract
- Milk Chocolate contains Cocoa Solids 25% minimum and Milk Solids 14% minimum
- Contains Vegetable Fats in addition to Cocoa Butter

Allergy Text

May contain **PEANUTS** and **NUTS**.

Nutrition

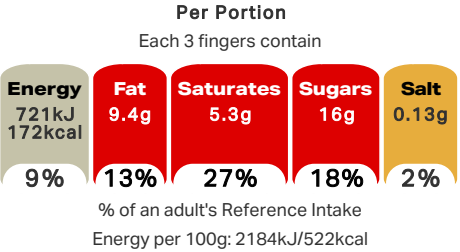
	Per 100 g	Per 3 Fingers	Reference Intake*	%RI*
Energy	2184 kJ	721 kJ	8400 kJ	
	522 kcal	172 kcal	2000 kcal	9 %
Fat	28.4 g	9.4 g	70 g	13 %
of which: saturates	16.0 g	5.3 g	20 g	27 %
Carbohydrate	58.5 g	19.3 g	260 g	7 %
of which: sugars	48.4 g	16.0 g	90 g	18 %
Fibre	1.6 g	0.5 g	-	-

Protein	7.2 g	2.4 g	50 g	5 %
Salt	0.38 g	0.13 g	6 g	2 %
*Reference Intake of an average adult (8400kJ / 2000kcal)				
Contains 3 servings				
Portions should be adjusted for children of different ages				

Calculated Nutrition

	per 100g	Per 3 Fingers
Energy (kJ)	2184	721
Energy (kcal)	522	172
Fat (g)	28.4	9.4
of which saturates (g)	16	5.3
Carbohydrate (g)	58.5	19.3
of which sugars (g)	48.4	16
Fibre (g)	1.6	0.5
Protein (g)	7.2	2.4
Salt (g)	0.38	0.13

Front of Pack Nutrition



Nutrition Other Text

Contains 3 servings
Portions should be adjusted for children of different ages

Reference Intake Statement

Reference Intake Statement - Reference Intake of an average adult (8400kJ / 2000kcal)

Product Description

Alternative Description

Supplier Preferred Product Name - KitKat Salted Caramel Chocolate Sharing Bar 99g

Brand

KitKat

Manufacturer Brand

Brand - Nestlé

Features

NEW 99g KitKat® Salted Caramel Sharing Bar
Crispy KitKat® wafer, salted caramel flavoured filling and covered with thick marbled swirls.
Perfect for sharing with family or friends
No artificial colours, flavours or preservatives
Part of the innovative 'Breaks for Good' programme

Standardised Brand

Brand - KitKat

Regulated Product Name

Crispy wafer fingers covered with caramel flavour milk chocolate (50.7%) and white coating (11.9%) with a salted caramel flavoured filling (20.3%).

Marketing

Company Name

Nestlé UK Ltd / Nestlé Ireland Ltd

Company Address

UK: Nestlé UK Ltd,
PO Box 207,
York,
YO91 1WS.

IE: Nestlé Ireland Ltd,
3009 Lake Drive,
Citywest,
Dublin,
D24 H6RR.

Third Party Logos

- Rainforest Alliance
- Tidyman

Product Marketing

Discover a delicious new way to break! Snap into a delicious NEW 99g KitKat® Salted Caramel Sharing Bar with crispy KitKat® wafer, salted caramel flavoured filling, covered with thick caramel flavour milk chocolate and marbled swirls.

A new KitKat® experience to delight your senses. Have a break, have a KitKat®.

Your break is part of an innovative programme 'Breaks for Good', that is helping cocoa-farming families to earn more money, planting more trees and helping kids into school.

Brand Marketing

Discover our full range of delicious KitKat® sharing bar flavours: Double Chocolate, Salted Caramel & Hazelnut!

Other Information

Dispose of Responsibly

Rainforest Alliance - People & Nature, Cocoa

©Reg. Trademark of Société des Produits Nestlé S.A.

Further Description

BREAKS FOR GOOD-

Your break is part of an innovative programme 'Breaks for Good', that is helping cocoa-farming families to earn more money, planting more trees and helping kids into school.

Discover the good behind your break - <https://www.kitkat.co.uk/breaks-for-good>

Check out our YouTube Channel at www.youtube.com/user/KITKAT
Join us at facebook.com/KITKATuk Visit www.KITKAT.co.uk
Share your chocolate biscuit break with #MyBreak

Good to remember: enjoying chocolate as part of a varied, balanced diet and a healthy lifestyle, is one of life's little pleasures.

Enhanced Marketing Data

SEO Metatag

kitkat
kit kat
kitkat sharing bar
chocolate sharing bar
milk chocolate bar
dark chocolate
double chocolate bar

Health & Lifestyle

Allergy Advice

Milk - Contains
Nuts - May Contain
Peanuts - May Contain
Wheat - Contains

Storage & Usage

Storage Type

Type
Ambient

Preparation and Usage

Know your serving
3 Fingers = 1 Serving

Storage

Best before end see under the fin seal.
Store cool and dry

Date Marking Type

- Best Before

Brandbank Captured Pack Data

Pack Size

99g e

Numeric Size

Numeric Size - 99

Pack Type

Type - Wrap

Recycling Scheme

- OPRL

Recycling Other Text

Recycle at Store - Don't recycle at home
Recycle at Home / Visit MYWASTE.IE

Usage Count

Number of uses - Servings

3

Usage Other Text

Contains 3 servings

Customer Services

Manufacturers Address

UK: Nestlé UK Ltd,
PO Box 207,
York,
YO91 1WS.

IE: Nestlé Ireland Ltd,
3009 Lake Drive,
Citywest,
Dublin,
D24 H6RR.

Return To

Let's Talk
UK: 0800 604 604
Nestlé UK Ltd,
PO Box 207,
York,
YO91 1WS.

IE: 00800 6378 5385
Nestlé Ireland Ltd,
3009 Lake Drive,
Citywest,
Dublin,
D24 H6RR.
www.kitkat.com

Telephone Helpline

UK: 0800 604 604
IE: 00800 6378 5385

Web Address

www.kitkat.com

Extended Data

Description Breakdown

Variant - Salted Caramel

