

## KitKat Hazelnut 99g



**EAN**  
3800020492833

**Target market(s)**  
GB, IE

### Components

**Ingredients**

Sugar

Cocoa Mass

Vegetable Fats (Palm, Shea)

**WHEAT** Flour

Skimmed **MILK** Powder

Cocoa Butter

Whey Powder Product (**MILK**)

Glucose Syrup

Butterfat (**MILK**)

**HAZELNUT** Paste

Fat-Reduced Cocoa Powder

Emulsifier (Lecithins)

Salt

Natural Flavouring

Raising Agent (Sodium Bicarbonate)

Milk Chocolate contains Cocoa Solids 25% minimum and Milk Solids 14% minimum

Dark Chocolate contains Cocoa Solids 42% minimum

Contains Vegetable Fats in addition to Cocoa Butter

**Allergy Text**

May contain **PEANUTS**.

**Nutrition**

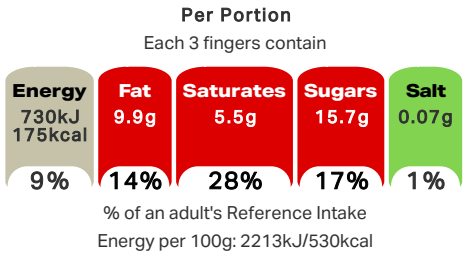
	Per 100 g	Per 3 Fingers	Reference Intake*	%RI*
Energy	2213 kJ	730 kJ	8400 kJ	9 %
	530 kcal	175 kcal	2000 kcal	
Fat	29.9 g	9.9 g	70 g	14 %
of which: saturates	16.6 g	5.5 g	20 g	28 %
Carbohydrate	57.8 g	19.1 g	260 g	7 %
of which: sugars	47.5 g	15.7 g	90 g	17 %
Fibre	2.5 g	0.8 g	-	-
Protein	5.8 g	1.9 g	50 g	4 %

Salt	0.21 g	0.07 g	6 g	1 %
*Reference Intake of an average adult (8400kJ/2000kcal)				
Contains 3 servings				
Portions should be adjusted for children of different ages				

Calculated Nutrition

	per 100g	Per 3 Fingers
Energy (kJ)	2213	730
Energy (kcal)	530	175
Fat (g)	29.9	9.9
of which saturates (g)	16.6	5.5
Carbohydrate (g)	57.8	19.1
of which sugars (g)	47.5	15.7
Fibre (g)	2.5	0.8
Protein (g)	5.8	1.9
Salt (g)	0.21	0.07

Front of Pack Nutrition



Nutrition Other Text

Contains 3 servings

Portions should be adjusted for children of different ages

Reference Intake Statement

Reference Intake Statement - Reference Intake of an average adult (8400kJ/2000kcal)

Product Description

Alternative Description

Promotional Description - KitKat Hazelnut 99g

Supplier Preferred Product Name - KitKat Hazelnut Chocolate Sharing Bar 99g

Brand

KitKat

Manufacturer Brand

Brand - Nestlé

Features

NEW 99g KitKat® Hazelnut Sharing Bar

Crispy KitKat® wafer, hazelnut flavoured filling and covered with thick, milk & dark chocolate marbled swirls

Perfect for sharing with family or friends

No artificial colours, flavours or preservatives

Part of the innovative 'Breaks for Good' programme

Standardised Brand

Brand - KitKat

Regulated Product Name

Crispy wafer fingers covered with milk (50.9%) and dark chocolate (11.9%) with a hazelnut filling (20.3%).

## Marketing

### Company Name

Nestlé UK Ltd / Nestlé Ireland Ltd

### Company Address

UK: Nestlé UK Ltd,  
PO Box 207,  
York,  
YO91 1WS.

IE: Nestlé Ireland Ltd,  
3009 Lake Drive,  
Citywest,  
Dublin,  
D24 H6RR.

### Third Party Logos

- Rainforest Alliance
- Tidyman

### Product Marketing

Discover a delicious new way to break! Snap into a delicious NEW 99g KitKat® Hazelnut Sharing Bar with crispy KitKat® wafer, hazelnut flavoured filling and covered with thick, milk & dark chocolate marbled swirls.

A new KitKat® experience to delight your senses. Have a break, have a KitKat®.

Your break is part of an innovative programme 'Breaks for Good', that is helping cocoa-farming families to earn more money, planting more trees and helping kids into school.

### Brand Marketing

Discover our full range of delicious KitKat® sharing bar flavours: Double Chocolate, Salted Caramel & Hazelnut!

### Other Information

Dispose of Responsibly

Rainforest Alliance - People & Nature, Cocoa

©Reg. Trademark of Société des Produits Nestlé S.A.

### Further Description

BREAKS FOR GOOD-

Your break is part of an innovative programme 'Breaks for Good', that is helping cocoa-farming families to earn more money, planting more trees and helping kids into school.

Discover the good behind your break - <https://www.kitkat.co.uk/breaks-for-good>

Check out our YouTube Channel at [www.youtube.com/user/KITKAT](https://www.youtube.com/user/KITKAT)  
Join us at [facebook.com/KITKATuk](https://facebook.com/KITKATuk) Visit [www.KITKAT.co.uk](https://www.KITKAT.co.uk)  
Share your chocolate biscuit break with #MyBreak

Good to remember: enjoying chocolate as part of a varied, balanced diet and a healthy lifestyle, is one of life's little pleasures.

## Enhanced Marketing Data

### SEO Metatag

kit kat  
kitkat  
kitkat sharing bar  
milk chocolate bar  
dark chocolate bar  
hazelnut chocolate

## Health & Lifestyle

### Allergy Advice

Hazelnuts - Contains  
Milk - Contains  
Peanuts - May Contain  
Wheat - Contains

Storage & Usage

Storage Type

Type
Ambient

Preparation and Usage

Know your serving  
3 Fingers = 1 Serving

Storage

Best before end see under the fin seal.  
Store cool and dry.

Date Marking Type

- Best Before

Brandbank Captured Pack Data

Pack Size

99g e

Numeric Size

Numeric Size - 99

Pack Type

Type - Wrap

Recycling Scheme

- OPRL

Recycling Other Text

Recycle at Store - Don't recycle at home  
Recycle at Home / Visit MYWASTE.IE

Usage Count

Number of uses - Servings

3

Usage Other Text

Contains 3 servings

Customer Services

Manufacturers Address

UK: Nestlé UK Ltd,  
PO Box 207,  
York,  
YO91 1WS.

IE: Nestlé Ireland Ltd,  
3009 Lake Drive,  
Citywest,  
Dublin,  
D24 H6RR.

Return To

Let's Talk  
UK: 0800 604 604  
Nestlé UK Ltd,  
PO Box 207,  
York,  
YO91 1WS.

IE: 00800 6378 5385  
Nestlé Ireland Ltd,  
3009 Lake Drive,  
Citywest,  
Dublin,  
D24 H6RR.  
www.kitkat.com

Telephone Helpline

UK: 0800 604 604  
IE: 00800 6378 5385

Web Address

www.kitkat.com

Extended Data

Description Breakdown

Variant - Hazelnut

