

KitKat Double Chocolate 99g



EAN
3800020492840

Target market(s)
GB, IE

Components

Ingredients

- Sugar
- Vegetable Fats (Palm, Shea)
- Cocoa Mass
- WHEAT** Flour
- Cocoa Butter
- Skimmed **MILK** Powder
- Whey Powder Product (**MILK**)
- Glucose Syrup
- Fat-Reduced Cocoa Powder
- Butterfat (**MILK**)
- Emulsifier (Lecithins)
- Raising Agent (Sodium Bicarbonate)
- Natural Flavouring
- Milk Chocolate contains Cocoa Solids 25% minimum and Milk Solids 14% minimum
- Dark Chocolate contains Cocoa Solids 42% minimum
- Contains Vegetable Fats in addition to Cocoa Butter

Allergy Text

May contain **PEANUTS** and **NUTS**.

Nutrition

	Per 100 g	Per 3 Fingers	Reference Intake*	%RI*
Energy	2217 kJ	732 kJ	8400 kJ	
	531 kcal	175 kcal	2000 kcal	9 %
Fat	30.4 g	10.0 g	70 g	14 %
of which: saturates	16.9 g	5.6 g	20 g	28 %
Carbohydrate	56.6 g	18.7g	260 g	7 %
of which: sugars	46.6 g	15.4g	90 g	17 %
Fibre	3.2 g	1.1 g	-	-
Protein	5.7 g	1.9 g	50 g	4 %
Salt	0.14 g	0.05 g	6 g	<1 %
*Reference Intake of an average adult (8400kJ/2000kcal)				

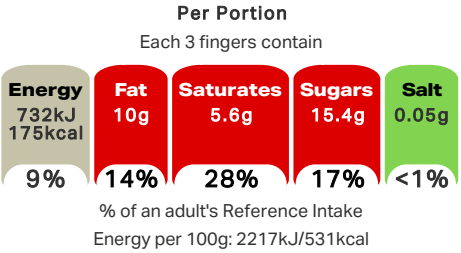
Contains 3 servings

Portions should be adjusted for children of different ages

Calculated Nutrition

	per 100g	Per 3 Fingers
Energy (kJ)	2217	732
Energy (kcal)	531	175
Fat (g)	30.4	10
of which saturates (g)	16.9	5.6
Carbohydrate (g)	56.6	18.7
of which sugars (g)	46.6	15.4
Fibre (g)	3.2	1.1
Protein (g)	5.7	1.9
Salt (g)	0.14	0.05

Front of Pack Nutrition



Nutrition Other Text

Contains 3 servings

Portions should be adjusted for children of different ages

Reference Intake Statement

Reference Intake Statement - Reference Intake of an average adult (8400kJ / 2000kcal)

Product Description

Alternative Description

Supplier Preferred Product Name - KitKat Double Chocolate Sharing Bar 99g

Brand

KitKat

Manufacturer Brand

Brand - Nestlé

Features

NEW 99g KitKat® Double Chocolate Sharing Bar

Crispy KitKat® wafer, cocoa flavoured filling all covered with thick, milk & dark chocolate marbled swirls

Perfect for sharing with family or friends

No artificial colours, flavours or preservatives

Part of the innovative 'Breaks for Good' programme

Standardised Brand

Brand - KitKat

Regulated Product Name

Crispy wafer fingers covered with milk (45.8%) and dark chocolate (17.0%) with a cocoa flavoured filling (20.3%).

Marketing

Company Name

Nestlé UK Ltd / Nestlé Ireland Ltd

Company Address

UK: Nestlé UK Ltd,
PO Box 207,
York,
YO91 1WS.

IE: Nestlé Ireland Ltd,
3009 Lake Drive,
Citywest,
Dublin,
D24 H6RR.

Third Party Logos

- Rainforest Alliance
- Tidyman

Product Marketing

Discover a delicious new way to break! Snap into a delicious NEW 99g KitKat® Double Chocolate Sharing Bar with crispy KitKat® wafer, cocoa flavoured filling and covered with thick, milk & dark chocolate marbled swirls.

A new KitKat® experience to delight your senses. Have a break, have a KitKat®.

Your break is part of an innovative programme 'Breaks for Good', that is helping cocoa-farming families to earn more money, planting more trees and helping kids into school.

Brand Marketing

Discover our full range of delicious KitKat® sharing bar flavours: Double Chocolate, Salted Caramel & Hazelnut!

Other Information

Dispose of Responsibly

Rainforest Alliance - People & Nature, Cocoa

©Reg. Trademark of Société des Produits Nestlé S.A.

Further Description

BREAKS FOR GOOD-

Your break is part of an innovative programme 'Breaks for Good', that is helping cocoa-farming families to earn more money, planting more trees and helping kids into school.

Discover the good behind your break - <https://www.kitkat.co.uk/breaks-for-good>

Check out our YouTube Channel at www.youtube.com/user/KITKAT
Join us at facebook.com/KITKATuk Visit www.KITKAT.co.uk
Share your chocolate biscuit break with #MyBreak

Good to remember: enjoying chocolate as part of a varied, balanced diet and a healthy lifestyle, is one of life's little pleasures.

Enhanced Marketing Data

SEO Metatag

KitKat
kit kat
Chocolate sharing bar
kitkat sharing bar
double chocolate bar
milk chocolate bar
dark chocolate bar

Health & Lifestyle

Allergy Advice

Milk - Contains
Nuts - May Contain
Peanuts - May Contain
Wheat - Contains

Storage & Usage

Storage Type

Type
Ambient

Preparation and Usage

Know your serving
3 Fingers = 1 Serving

Storage

Best before end see under the fin seal.
Store cool and dry.

Date Marking Type

- Best Before

Brandbank Captured Pack Data

Pack Size

99g e

Numeric Size

Numeric Size - 99

Pack Type

Type - Wrap

Recycling Scheme

- OPRL

Recycling Other Text

Recycle at Store - Don't recycle at home
Recycle at Home / Visit MYWASTE.IE

Usage Count

Number of uses - Servings

3

Usage Other Text

Contains 3 servings

Customer Services

Manufacturers Address

UK: Nestlé UK Ltd,
PO Box 207,
York,
YO91 1WS.

IE: Nestlé Ireland Ltd,
3009 Lake Drive,
Citywest,
Dublin,
D24 H6RR.

Return To

Let's Talk
UK: 0800 604 604
Nestlé UK Ltd,
PO Box 207,
York,
YO91 1WS.

IE: 00800 6378 5385
Nestlé Ireland Ltd,
3009 Lake Drive,
Citywest,
Dublin,
D24 H6RR.
www.kitkat.com

Telephone Helpline

UK: 0800 604 604
IE: 00800 6378 5385

Web Address

www.kitkat.com

Extended Data

Description Breakdown

Functional Name - Chocolate
Variant - Double



