

NielsenIQ Brandbank

Nestle The Big Biscuit Box 69 Bars 1.357kg



EAN

8445290576095

Target market(s)

GB, IE

Product Description

Alternative Description

Supplier Preferred Product Name - Nestle Kitkat and Friends Big Biscuit Box 69 Assorted Biscuit Box 1.357kg

Brand

Nestle

Features

An irresistible assortment of 69 KitKat®, Blue Riband® and Toffee Crisp® chocolate biscuit bars.

21x KitKat® 2 Finger Original, 9x KitKat® 2 Finger Orange, 9x KitKat® 2 Finger Dark, 16x Blue Riband® Milk and 14x Toffee Crisp® Biscuits.

Individually wrapped biscuits in a display ready presentation.

Rainforest Alliance Certified cocoa

Suitable for vegetarians

The perfect solution to treat your friends, family, colleagues or guests to a better break.

Standardised Brand

Brand - Nestle

Box Contents

KitKat® 2 Finger Milk 21 x 20.7g e

KitKat® 2 Finger Orange 9 x 20.7g e

Toffee Crisp® 14 x 18.7g e

KitKat® 2 Finger Dark 9 x 20.7g e

Blue Riband® 16 x 18g

Regulated Product Name

Kitkat 2 Finger Milk - Two crispy wafer fingers covered with milk chocolate (66%).

Kitkat 2 Finger Orange - Two crispy wafer fingers covered in orange flavoured milk chocolate (66%).

Toffee Crisp - Biscuit pieces, crisped cereal (14%) and caramel (20%) covered in milk chocolate.

Kitkat 2 Finger Dark - Two crispy wafer fingers covered in dark chocolate (66%).

Blue Riband - Crisp wafer biscuits covered in milk chocolate (47%).

Marketing

Company Name

Nestlé UK Ltd / Nestlé Ireland Ltd

Company Address

Nestlé UK Ltd,
PO Box 207,
York,
YO91 1WS.

Nestlé Ireland Ltd,
3009 Lake Drive,
Citywest,
Dublin,
D24 H6RR.

Third Party Logos

- Rainforest Alliance

Product Marketing

Our NEW Kitkat and Friends Big Biscuit Box is a display-ready presentation box featuring 69 Biscuit Bars across an assortment of 5 flavours: KitKat® 2 Finger Original Milk Chocolate, KitKat® 2 Finger Orange Milk Chocolate, KitKat® 2 Finger Dark, Blue Riband® Milk Chocolate and Toffee Crisp® Milk Chocolate Biscuit.

Whether you're stocking up the office biscuit drawer or treating your friends and family to a better break, our Big Biscuit Box is free from artificial colours, flavours, preservatives.

KitKat® have been making breaks delicious since 1935 with tasty chocolate, and the secret to our perfect chocolate-to-wafer ratio. Now, with the Big Biscuit Box you can liven up any gathering by bringing an assortment of biscuits to share amongst colleagues and friends.

Brand Marketing

Have you tried our Nestlé Mini Breaks Biscuit Bar Box?

Other Information

Rainforest Alliance - People & Nature, Cocoa

® Reg. Trademark of Société des Produits Nestlé S.A.

All packshots are for illustrative purposes only.
Occasionally it may be necessary to replace a biscuit with another of equally high quality.

Further Description

Join us at facebook.com/kitkatuk
Share your chocolate biscuit break with #MyBreak
Check out our YouTube Channel at www.youtube.com/user/kitkat
Visit www.kitkat.co.uk

Good to remember: enjoying chocolate as part of a varied, balanced diet and a healthy lifestyle, is one of life's little pleasures.

Health & Lifestyle

Allergy Advice

Barley - Contains
Milk - Contains
Nuts - May Contain
Peanuts - May Contain
Soya - May Contain
Wheat - Contains

Storage & Usage

Storage Type

Type

Ambient

Storage

Store cool and dry
Best before end see side panel.

Date Marking Type

- Best Before

Brandbank Captured Pack Data

Pack Size

2.99lbs

Numeric Size

Numeric Size - 2.99

Recycling Info

Box - Recycle

Pack Type

Type - Box

Recycling Scheme

- OPRL

Recycling Other Text

Recycle at Home / Visit MYWASTE.IE

Usage Count

Number of uses - Servings

69

Usage Other Text

Contains approx. 69 servings

Customer Services

Manufacturers Address

Nestlé UK Ltd,
PO Box 207,
York,
YO91 1WS.

Nestlé Ireland Ltd,
3009 Lake Drive,
Citywest,
Dublin,
D24 H6RR.

Return To

UK: 0800 604 604
Nestlé UK Ltd,
PO Box 207,
York,
YO91 1WS.

IE: 00800 6378 5385
Nestlé Ireland Ltd,
3009 Lake Drive,
Citywest,
Dublin,
D24 H6RR.

Telephone Helpline

UK: 0800 604 604
IE: 00800 6378 5385

Extended Data

Description Breakdown

Functional Name - Biscuit Box

Kitkat 2 finger milk

Components

Ingredients

Sugar

WHEAT Flour (contains Calcium, Iron, Thiamin and Niacin)

Whole **MILK** Powder

Cocoa Mass

Cocoa Butter

Vegetable Fats (Palm, Shea, Palm Kernel, Sal)

Whey Powder Product (**MILK**)

Skimmed **MILK** Powder

Emulsifier (Lecithins)

Yeast

Raising Agent (Sodium Bicarbonate)

Glucose Syrup

Butterfat (**MILK**)

Whey Powder (**MILK**)

Natural Flavourings

Nutrition

	Per 100g	Per bar	%RI*
Energy	2101kJ / 502kcal	435kJ / 104kcal	5%
Fat	24.3g	5.0g	7%
of which: saturates	13.8g	2.8g	14%
Carbohydrate	62.5g	12.9g	5%

of which: sugars	49.6g	10.3g	11%
Fibre	2.3g	0.5g	-
Protein	6.9g	1.4g	3%
Salt	0.22g	0.05g	<1%

*RI: Reference Intake of an average adult (8400kJ/2000kcal)

Contains 21 servings

Portions should be adjusted for children of different ages

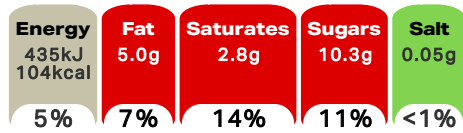
Calculated Nutrition

	per 100g	Per bar
Energy (kJ)	2101	435
Energy (kcal)	502	104
Fat (g)	24.3	5
of which saturates (g)	13.8	2.8
Carbohydrate (g)	62.5	12.9
of which sugars (g)	49.6	10.3
Fibre (g)	2.3	0.5
Protein (g)	6.9	1.4
Salt (g)	0.22	0.05

Front of Pack Nutrition

Per Portion

Each serving contains (based on KitKat Milk)



of an adult's Reference Intake (RI)*

Energy per 100g: 2101kJ / 502kcal

*RI: Reference Intake of an average adult (8400kJ/2000kcal)

Nutrition Other Text

Contains 21 servings

Portions should be adjusted for children of different ages

Reference Intake Statement

Reference Intake Statement - RI: Reference Intake of an average adult (8400kJ/2000kcal)

Kitkat 2 finger orange

Components

Ingredients

Sugar

WHEAT Flour (contains Calcium, Iron, Thiamin and Niacin)

Whole **MILK** Powder

Cocoa Mass

Cocoa Butter

Vegetable Fats (Palm, Shea, Palm Kernel, Sal)

Whey Powder Product (**MILK**)

Skimmed **MILK** Powder

Emulsifier (Lecithins)

Natural Orange Flavouring

Yeast

Raising Agent (Sodium Bicarbonate)

Glucose Syrup

Butterfat (**MILK**)

Whey Powder (**MILK**)

Natural Flavourings

Nutrition

	Per 100g	Per bar	%RI*
Energy	2095kJ / 500kcal	434kJ / 104kcal	5%
Fat	24.2g	5.0g	7%
of which: saturates	13.7g	2.8g	14%
Carbohydrate	62.3g	12.9g	5%
of which: sugars	49.4g	10.2g	11%
Fibre	2.3g	0.5g	-
Protein	6.9g	1.4g	3%
Salt	0.22g	0.05g	<1%

*RI: Reference Intake of an average adult (8400kJ/2000kcal)

Contains 9 servings

Portions should be adjusted for children of different ages

Calculated Nutrition

	per 100g	Per bar
Energy (kJ)	2095	434
Energy (kcal)	500	104
Fat (g)	24.2	5
of which saturates (g)	13.7	2.8
Carbohydrate (g)	62.3	12.9
of which sugars (g)	49.4	10.2
Fibre (g)	2.3	0.5
Protein (g)	6.9	1.4
Salt (g)	0.22	0.05

Nutrition Other Text

Contains 9 servings

Portions should be adjusted for children of different ages

Reference Intake Statement

Reference Intake Statement - RI: Reference Intake of an average adult (8400kJ/2000kcal)

Toffee crisp

Components

Ingredients

Sugar

Vegetable Fats (Palm, Coconut, Shea, Sunflower)

Glucose-Fructose Syrup

WHEAT Flour

Whey Powder Product (**MILK**)

Sweetened Condensed **MILK** (**MILK**, Sugar)

Cocoa Butter

Rice Flour

Dried Whole **MILK**

Cocoa Mass

Fat-Reduced Cocoa Powder

Emulsifier (Lecithins)

Salt

Malted **BARLEY** Flour

Firming Agent (Calcium Carbonate)

Caramelised Sugar

Raising Agent (Sodium Bicarbonate)

WHEAT Starch

Flavouring

Allergy Text

May contain **PEANUTS, TREE NUTS** and **SOYA**.

Nutrition

	Per 100g	Per bar	%RI*
Energy	2171kJ / 519kcal	406kJ / 97kcal	5%
Fat	28.5g	5.3g	8%
of which: saturates	18.3g	3.4g	17%
Carbohydrate	60.4g	11.3g	4%
of which: sugars	48.6g	9.1g	10%
Fibre	1.5g	0.3g	-
Protein	4.6g	0.9g	2%
Salt	0.36g	0.07g	1%

*RI: Reference Intake of an average adult (8400kJ/2000kcal)

Contains 14 servings

Portions should be adjusted for children of different ages

Calculated Nutrition

	per 100g	Per bar
Energy (kJ)	2171	406
Energy (kcal)	519	97
Fat (g)	28.5	5.3
of which saturates (g)	18.3	3.4
Carbohydrate (g)	60.4	11.3
of which sugars (g)	48.6	9.1
Fibre (g)	1.5	0.3
Protein (g)	4.6	0.9
Salt (g)	0.36	0.07

Nutrition Other Text

Contains 14 servings

Portions should be adjusted for children of different ages

Reference Intake Statement

Reference Intake Statement - RI: Reference Intake of an average adult (8400kJ/2000kcal)

Kitkat 2 finger dark

Components

Ingredients

Sugar

Cocoa Mass

WHEAT Flour (contains Calcium, Iron, Thiamin and Niacin)

Vegetable Fats (Palm, Palm Kernel, Shea, Sal)

Cocoa Butter

Butterfat (**MILK**)

Emulsifier (Lecithins)

Whole **MILK** Powder

Whey Powder Product (**MILK**)

Yeast

Raising Agent (Sodium Bicarbonate)

Skimmed **MILK** Powder

Glucose Syrup

Whey Powder (**MILK**)

Natural Flavourings

Nutrition

	Per 100g	Per bar	%RI*
Energy	2096kJ / 501kcal	434kJ / 104kcal	5%
Fat	25.7g	5.3g	8%
of which: saturates	14.2g	2.9g	15%
Carbohydrate	58.6g	12.1g	5%
of which: sugars	44.8g	9.3g	10%
Fibre	5.5g	1.1g	-
Protein	5.6g	1.2g	2%
Salt	0.04g	0.01g	<1%

*RI: Reference Intake of an average adult (8400kJ/2000kcal)

Contains 9 servings

Portions should be adjusted for children of different ages

Calculated Nutrition

	per 100g	Per bar
Energy (kJ)	2096	434
Energy (kcal)	501	104
Fat (g)	25.7	5.3
of which saturates (g)	14.2	2.9
Carbohydrate (g)	58.6	12.1
of which sugars (g)	44.8	9.3
Fibre (g)	5.5	1.1
Protein (g)	5.6	1.2
Salt (g)	0.04	0.01

Nutrition Other Text

Contains 9 servings

Portions should be adjusted for children of different ages

Reference Intake Statement

Reference Intake Statement - RI: Reference Intake of an average adult (8400kJ/2000kcal)

Blue riband

Components

Ingredients

Sugar

WHEAT Flour

Vegetable Fats (Palm, Shea)

Cocoa Butter

Whole **MILK** Powder

Cocoa Mass

Whey Powder Product (**MILK**)

Maltodextrin

Emulsifier (Lecithins)

Fat-Reduced Cocoa Powder

Flavourings

Raising Agent (Sodium Bicarbonate)

Salt

Allergy Text

May contain **PEANUTS, TREE NUTS** and **SOYA**.

Nutrition

	Per 100g	Per bar	%RI*
Energy	2157kJ / 515kcal	388kJ / 93kcal	5%
Fat	25.5g	4.6g	7%
of which: saturates	13.9g	2.5g	13%
Carbohydrate	66.0g	11.9g	5%
of which: sugars	51.1g	9.2g	10%
Fibre	1.4g	0.3g	-
Protein	4.6g	0.8g	2%
Salt	0.15g	0.03g	<1%

*RI: Reference Intake of an average adult (8400kJ/2000kcal)

Contains 16 servings

Portions should be adjusted for children of different ages

Calculated Nutrition

	per 100g	Per bar
Energy (kJ)	2157	388
Energy (kcal)	515	93
Fat (g)	25.5	4.6
of which saturates (g)	13.9	2.5
Carbohydrate (g)	66	11.9
of which sugars (g)	51.1	9.2
Fibre (g)	1.4	0.3
Protein (g)	4.6	0.8
Salt (g)	0.15	0.03

Nutrition Other Text

Contains 16 servings

Portions should be adjusted for children of different ages

Reference Intake Statement

Reference Intake Statement - RI: Reference Intake of an average adult (8400kJ/2000kcal)



AN ASSORTMENT OF BISCUITS INCLUDING KITKAT®, BLUE RIBAND® AND TOFFEE CRISP®

Product Name	Net Weight	Energy (kJ)	Energy (kcal)	Total Fat (g)	Saturated Fat (g)	Carbohydrate (g)	Sugars (g)	Fibre (g)	Protein (g)
KitKat Original	100g	2100	500	25.0	15.0	45.0	35.0	0.5	5.0
KitKat Orange	100g	2100	500	25.0	15.0	45.0	35.0	0.5	5.0
KitKat Caramel	100g	2100	500	25.0	15.0	45.0	35.0	0.5	5.0
KitKat Raspberry	100g	2100	500	25.0	15.0	45.0	35.0	0.5	5.0
KitKat Double Chocolate	100g	2100	500	25.0	15.0	45.0	35.0	0.5	5.0
Blue Riband Milk	100g	2100	500	25.0	15.0	45.0	35.0	0.5	5.0
Toffee Crisp	100g	2100	500	25.0	15.0	45.0	35.0	0.5	5.0

1.357kg

