

## Sanpellegrino Sparkling Blood Orange Beverage 330ml



**EAN**  
8002270606915

**Target market(s)**  
GB, IE

Components

Ingredients

Water  
Orange Juice from Concentrate (6%)  
Blood Orange Juice from Concentrate (4%)  
Carbon Dioxide  
Acid: Citric Acid  
Stabiliser: Pectin  
Natural Orange Flavouring with other Natural Flavourings  
Black Carrot Concentrate  
Orange Extract (0.05%)  
Lemon Juice Concentrate  
Salt  
Sweeteners: Acesulfame K  
Sucralose

Nutrition Header

Nutrition Header - Nutrition Information:

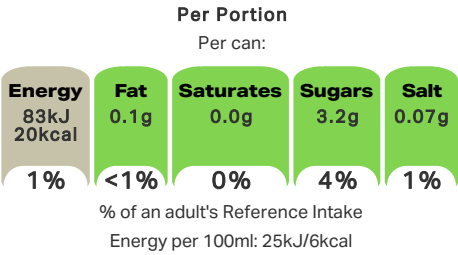
Nutrition

	Per 100ml	Per 330ml can	% RI*
Energy kJ	25	83	1%
kcal	6	20	
Fat	<0.1	0.1	<1%
of which:			
saturates	0.0	0.0	0%
Carbohydrate	1.0	3.4	1%
of which:			
sugars	1.0	3.2	4%
Fibre	0.1	0.5	-
Protein	<0.1	0.2	<1%
Salt	0.02	0.07	1%
*Reference intake of an average adult (8400kJ/2000kcal)			
Contains one serving			

Calculated Nutrition

	per 100ml	Per 330ml can
Energy (kJ)	25	83
Energy (kcal)	6	20
Fat (g)	<0.1	0.1
of which saturates (g)	0	0
Carbohydrate (g)	1	3.4
of which sugars (g)	1	3.2
Fibre (g)	0.1	0.5
Protein (g)	<0.1	0.2
Salt (g)	0.02	0.07

Front of Pack Nutrition



Nutrition Other Text

Contains one serving

Reference Intake Statement

Reference Intake Statement - Reference Intake of an average adult (8400kJ/2000kcal)

## Product Description

### Alternative Description

Supplier Preferred Product Name - San Pellegrino Sparkling Blood Orange 330ml

### Brand

San Pellegrino

### Features

With Italian Fruit Juice  
Italian Sparkling Drinks

### Standardised Brand

Brand - Sanpellegrino

### Regulated Product Name

Carbonated beverage with 6% orange juice from concentrate, 4% blood orange juice from concentrate and sweeteners.

## Marketing

### Company Name

Nestlé UK Ltd. / Stafford Lynch

### Company Address

Nestlé UK Ltd,  
PO Box 207,  
York,  
YO91 1WS.

Stafford Lynch,  
Unit 101 Northwest Business Park,  
Ballycoolin,  
Dublin,  
D15 NN20,  
Ireland.

### Third Party Logos

- Italy Flag
- Re-turn

### Product Marketing

0g added sugar†  
With no added sugars†  
†Contains naturally occurring sugars.

## Health & Lifestyle

### Additives

Sweeteners - Contains

## Storage & Usage

### Storage Type

#### Type

Ambient

### Storage

Store in a clean, cool, dry, and odourless place, away from direct sunlight and freezing temperatures.  
Best before: See base of can

### Date Marking Type

- Best Before

Brandbank Captured Pack Data

Pack Size

330ml

Numeric Size

Numeric Size - 330

Recycling Info

Whole Packaging - Recycle

Country

Country of Origin - Italy

Pack Type

Type - Can

Recycling Scheme

- OPRL

Usage Count

Number of uses - Servings

1

Usage Other Text

Contains one serving

Customer Supplied Pack Data

Supplied Dimension

Shelf Height (mm) (in)	Shelf Width (mm) (in)	Shelf Depth (mm) (in)
5.75	2.28	2.28

(GS1 package measurement rules)

Supplied Weight

Gross Weight (g) - 0.77

Customer Services

Manufacturers Address

Sanpellegrino S.p.A.,  
San Pellegrino Terme (BG),  
LOC. Ruspino,  
Italy.

Return To

Nestlé UK Ltd.,  
PO Box 207,  
York,  
YO91 1WS.  
Consumer Enquiries (Mon-Fri 9am-5pm) 0800 000030

Stafford Lynch,  
Unit 101 Northwest Business Park,  
Ballycoolin,  
Dublin,  
D15 NN20,  
Ireland.

Importer Address

Nestlé UK Ltd.,  
PO Box 207,  
York,  
YO91 1WS.

Stafford Lynch,  
Unit 101 Northwest Business Park,  
Ballycoolin,  
Dublin,  
D15 NN20,  
Ireland.

Telephone Helpline

0800 000030

Extended Data

Description Breakdown

Functional Name - Beverage  
Variant - Sparkling Blood Orange

Deposit Return Scheme Applicable

- Deposit Return Scheme Ireland



