

KitKat Finger Original Bars 8 x 20.7g (165.6g)



EAN

8445291524545

Target market(s)

GB, IE

Components

Ingredients

Sugar

WHEAT Flour (contains Calcium, Iron, Thiamin and Niacin)

Whole **MILK** Powder

Cocoa Mass

Cocoa Butter

Vegetable Fats (Palm, Shea, Palm Kernel, Sal)

Whey Powder Product (**MILK**)

Skimmed **MILK** Powder

Emulsifier (Lecithins)

Yeast

Raising Agent (Sodium Bicarbonate)

Glucose Syrup

Butterfat (**MILK**)

Whey Powder (**MILK**)

Natural Flavourings

Calculated Nutrition

	per 100g	Per Bar
Energy (kJ)	2101	435
Energy (kcal)	502	104
Fat (g)	24.3	5
of which saturates (g)	13.8	2.8
Carbohydrate (g)	62.5	12.9
of which sugars (g)	49.6	10.3
Fibre (g)	2.3	0.5
Protein (g)	6.9	1.4
Salt (g)	0.22	0.05

Nutrition

Per 100 g Per Bar Reference Intake %RI*

Energy	2101kJ / 502kcal	435kJ / 104kcal	8400kJ / 2000kcal	5%
Fat	24.3g	5.0g	70g	7%
of which: saturates	13.8g	2.8g	20g	14%
Carbohydrate	62.5g	12.9g	260g	5%
of which: sugars	49.6g	10.3g	90g	11%
Fibre	2.3g	0.5g	-	-
Protein	6.9g	1.4g	50g	3%
Salt	0.22g	0.05g	6g	<1%

*Reference Intake of an average adult (8400kJ/2000kcal)

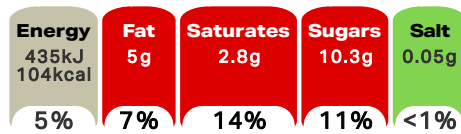
Contains 8 servings

Portions should be adjusted for children of different ages

Front of Pack Nutrition

Per Portion

Per bar



% of an adult's Reference Intake

Energy per 100g: 2101kJ/502kcal

Nutrition Other Text

Contains 8 servings

Portions should be adjusted for children of different ages

Reference Intake Statement

Reference Intake Statement - Reference Intake of an average adult (8400kJ/2000kcal)

Product Description

Alternative Description

Supplier Preferred Product Name - KitKat 2 Finger Milk Chocolate Biscuit Bar 8 Pack Multipack 165.6g

Brand

KitKat

Manufacturer Brand

Brand - Nestlé

Features

Multipack of 8 KitKat® 2 Finger milk chocolate biscuit bars

Delicious chocolate bars of 2 fingers of crispy wafer biscuit covered with smooth KitKat® milk chocolate.

A perfect break for all the family

Part of the innovative 'Breaks for Good' programme

No artificial colours, flavours or preservatives

Standardised Brand

Brand - KitKat

Regulated Product Name

Two crispy wafer fingers covered with milk chocolate (66%).

Marketing

Company Name

Nestlé UK Ltd / Nestlé Ireland Ltd

Company Address

Nestlé UK Ltd,
PO Box 207,
York,
YO91 1WS.

Nestlé Ireland Ltd,
3009 Lake Drive,
Citywest,
Dublin,
D24 H6RR.

Third Party Logos

- Rainforest Alliance

Product Marketing

Unwrap, break off a chocolate finger, snap it in two and savour the crispy wafer biscuit covered in deliciously smooth KitKat® chocolate.

With its perfect chocolate to wafer ratio, KitKat® is the perfect companion for any break. You can enjoy KitKat® as the iconic KitKat® 2 Finger, KitKat® 4 Finger, KitKat® Chunky and KitKat® Sharing Bars! So, whoever you are and however you break, Have a break, have a KitKat®.

Your break is part of an innovative programme 'Breaks for Good', that is helping cocoa-farming families to earn more money, planting more trees and helping kids into school.

Brand Marketing

Get more of your favourite KitKat® 2 fingers with our convenient multipack sizes of 6, 8, 12, and 18!

Manufacturer Marketing

Have a break, have a Nestlé KitKat®

Other Information

Dispose of Responsibly

Rainforest Alliance - People & Nature, Cocoa

® Reg. Trademark of Société des Produits Nestlé S.A.

Further Description

BREAKS FOR GOOD -

Your break is part of an innovative programme 'Breaks for Good', that is helping cocoa-farming families to earn more money, planting more trees and helping kids into school.

Discover the good behind your break - <https://www.kitkat.co.uk/breaks-for-good>

Check out our YouTube Channel at www.youtube.com/user/KITKAT

Join us at facebook.com/KITKATuk

Visit www.KITKAT.co.uk

Share your chocolate biscuit break with #MyBreak

Good to remember: enjoying chocolate as part of a varied, balanced diet and a healthy lifestyle, is one of life's little pleasures.

Enhanced Marketing Data

SEO Metatag

kitkat
kit kat
kitkat 2 finger
chocolate biscuit bar
milk chocolate bar
biscuit bar multipack

Health & Lifestyle

Lifestyle

- Suitable for Vegetarians

Allergy Advice

Milk - Contains
Wheat - Contains

Additives

Artificial Colours - Free From
Artificial Flavours - Free From
Artificial Preservatives - Free From

Storage & Usage

Storage Type

Type

Ambient

Preparation and Usage

Know your serving 1 bar = 1 serving

Storage

Best before end see under fin seal.
Store cool and dry.

Date Marking Type

- Best Before

Brandbank Captured Pack Data

Pack Size

20.7g e

Numeric Size

Numeric Size - 20.7

Pack Type

Type - Wrap

Recycling Other Text

Recycle at Home / Visit MYWASTE.IE
ISCC Certified - 75% Recycled Plastic Mass Balance Approach
Wrap - Recycle at Store - Don't recycle at home
Film - Recycle at Store - Don't recycle at home

Usage Count

Number of uses - Servings

8

Usage Other Text

Contains 8 servings

Units

Number of Units

Number of Units - 8

Customer Services

Manufacturers Address

Nestlé UK Ltd,
PO Box 207,
York,
YO91 1WS.

Nestlé Ireland Ltd,
3009 Lake Drive,
Citywest,
Dublin,
D24 H6RR.

Return To

Let's Talk
UK 0800 604 604
Nestlé UK Ltd,
PO Box 207,
York,
YO91 1WS.

IE 00800 6378 5385
Nestlé Ireland Ltd,
3009 Lake Drive,
Citywest,
Dublin,
D24 H6RR.
www.kitkat.com

Telephone Helpline

UK 0800 604 604
IE 00800 6378 5385

Web Address

www.kitkat.com

Extended Data

Description Breakdown

Functional Name - Bars
Variant - Original





**20x
8 packs**