

H23020 – Silver Frost Gift Box



Gluten	Soya	Peanuts	Nuts	Sesame	Lupin	Milk	Eggs	Sulphites	Celery	Mustard	Fish	Molluscs	Crustacean
Mandatory allergens contains:													
✓	✓	✓	✓	z		✓	✓	✓		z			
Key													
✓	Listed in ingredients												
z	May contain traces												

Product Name: Bottega Spa Casa Bottega Prosecco DOC 20cl (11%)

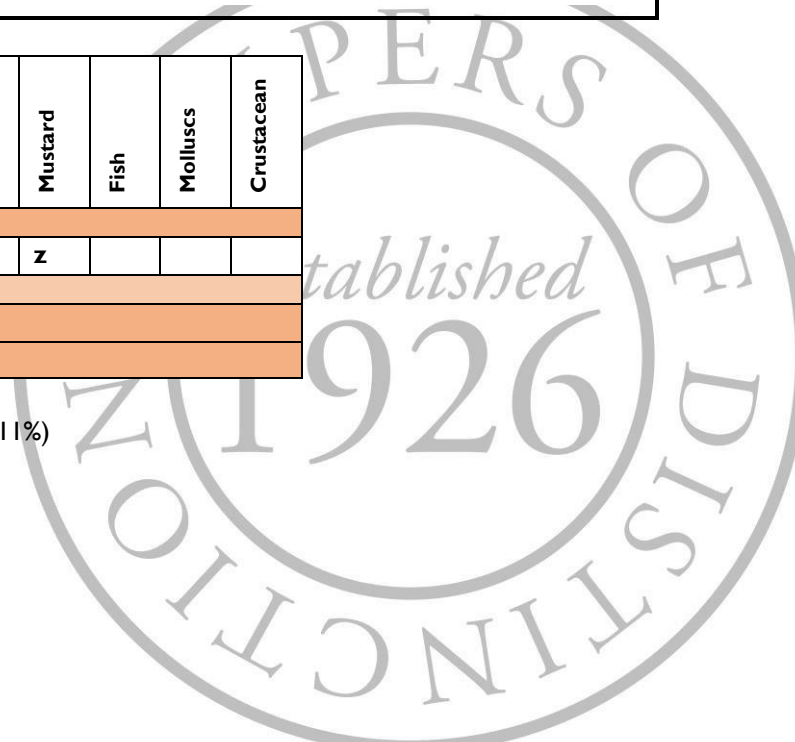
Ingredients: Contains **SULPHITES**.

Allergens: For allergens, see ingredients in **CAPITALS**.

Storage: Store in a cool, dry place.

Typical Value per 100g

Energy (kj):	N/A
Energy (kcal):	N/A
Fat (g):	N/A
Fat of which saturates (g):	N/A
Carbohydrate (g):	N/A
Carbohydrate of which sugars (g):	N/A
Protein (g):	N/A



Salt (g):	N/A
-----------	-----

Product Name: Waters Edge Chardonnay 187ml (13.5%)

Ingredients: Contains **SULPHITES**.

Allergens: For allergens, see ingredients in **CAPITALS**.

Storage: Store in a cool, dry place.

Typical Value per 100g

Energy (kj):	N/A
Energy (kcal):	N/A
Fat (g):	N/A
Fat of which saturates (g):	N/A
Carbohydrate (g):	N/A
Carbohydrate of which sugars (g):	N/A
Protein (g):	N/A
Salt (g):	N/A

Product Name: Waters Edge Merlot 187ml (13%)

Ingredients: Contains **SULPHITES**.

Allergens: For allergens, see ingredients in **CAPITALS**.

Storage: Store in a cool, dry place.

Typical Value per 100g

Energy (kj):	N/A
Energy (kcal):	N/A
Fat (g):	N/A
Fat of which saturates (g):	N/A
Carbohydrate (g):	N/A
Carbohydrate of which sugars (g):	N/A
Protein (g):	N/A
Salt (g):	N/A

Product Name: Thornton & France Milk Chocolate Bar 80g

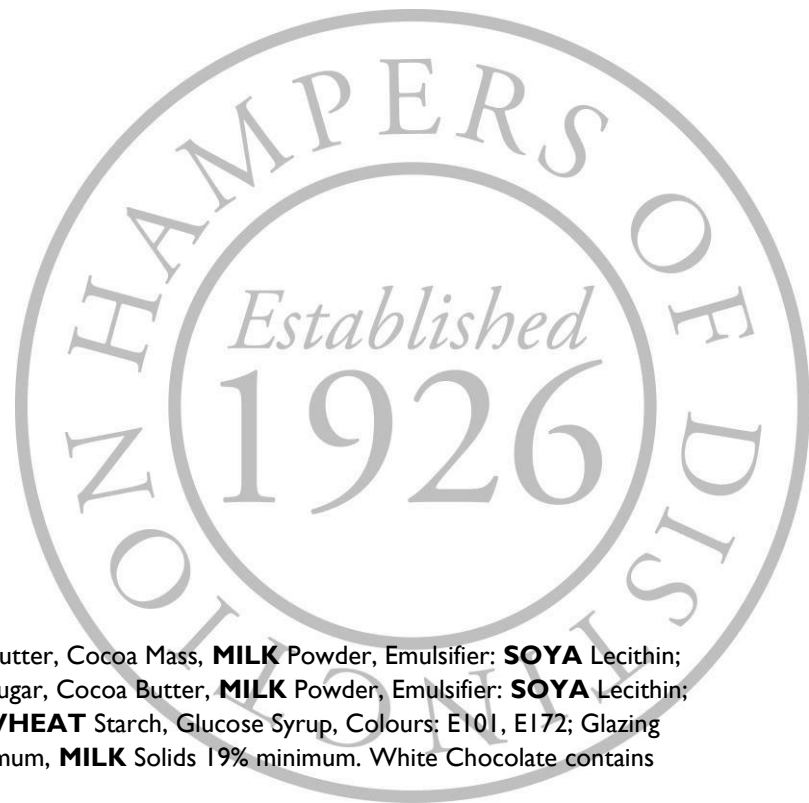
Ingredients: Colombian **MILK** Chocolate (86%) (Sugar, Cocoa Butter, Cocoa Mass, **MILK** Powder, Emulsifier: **SOYA** Lecithin; Flavouring: Natural Vanilla), Colombian White Chocolate (12%) (Sugar, Cocoa Butter, **MILK** Powder, Emulsifier: **SOYA** Lecithin; Flavouring: Vanilla Extract), Gold Sugar Decoration (2%) (Sugar, **WHEAT** Starch, Glucose Syrup, Colours: E101, E172; Glazing Agent: Shellac). **MILK** Chocolate contains Cocoa Solids 41% minimum, **MILK** Solids 19% minimum. White Chocolate contains Cocoa Solids 35% minimum, **MILK** Solids 24% minimum.

Allergens: For allergens, see ingredients in **CAPITALS**. May contain traces of **NUTS** and **PEANUTS** and **EGG**.

Storage: Store in a cool, dry place.

Typical Value per 100g

Energy (kj):	2385
--------------	------



Energy (kcal):	570
Fat (g):	38
Fat of which saturates (g):	23
Carbohydrate (g):	52
Carbohydrate of which sugars (g):	48
Protein (g):	7
Salt (g):	0.18

Product Name: Excelcium Praline Selection 180g

Ingredients: Sugar, **WHEAT** Starch, Whole **SOY** Flour, Glucose Syrup, Cocoa Butter, Palm Fat, Cocoa Mass, Glucose-Fructose Syrup, Whole **MILK** Powder, Flavouring: (Apricot, Amaretto, **HAZELNUT**, Cream, Orange, Toffee, Vanilla, Vanillin), Caramel Sugar Syrup, Dextrose, Acid: Citric Acid (E330), Emulsifier: Sunflower Lecithin (E322), Additives: Invertase (E1103), **MILK**, Sugar, **PEANUTS**, Rice Flour, **SOY** Oil, Salt, **HAZELNUTS**, Orange Peel.

Allergens: For allergens, see ingredients in **CAPITALS**. May contain traces of **EGGS** and other **NUTS**.

Storage: Store in a cool, dry place.

Typical Value per 100g

Energy (kj):	1971
Energy (kcal):	472
Fat (g):	21
Fat of which saturates (g):	11
Carbohydrate (g):	63
Carbohydrate of which sugars (g):	47
Protein (g):	6.2
Salt (g):	0.030

Product Name: Made for Drink Malt Vinegar & Sea Salt Crisps 40g

Ingredients: British Potatoes Hand Cooked In High Oleic Sunflower Oil With A Malt Vinegar And Dorset Sea Salt Seasoning (Maltodextrin, Hand Harvested Dorset Sea Salt, Spirit Vinegar, English Malt Vinegar [Made From **BARLEY**], Sugar, Citric Acid, Yeast Extract, Anticaking Agent [Silicone Dioxide]).

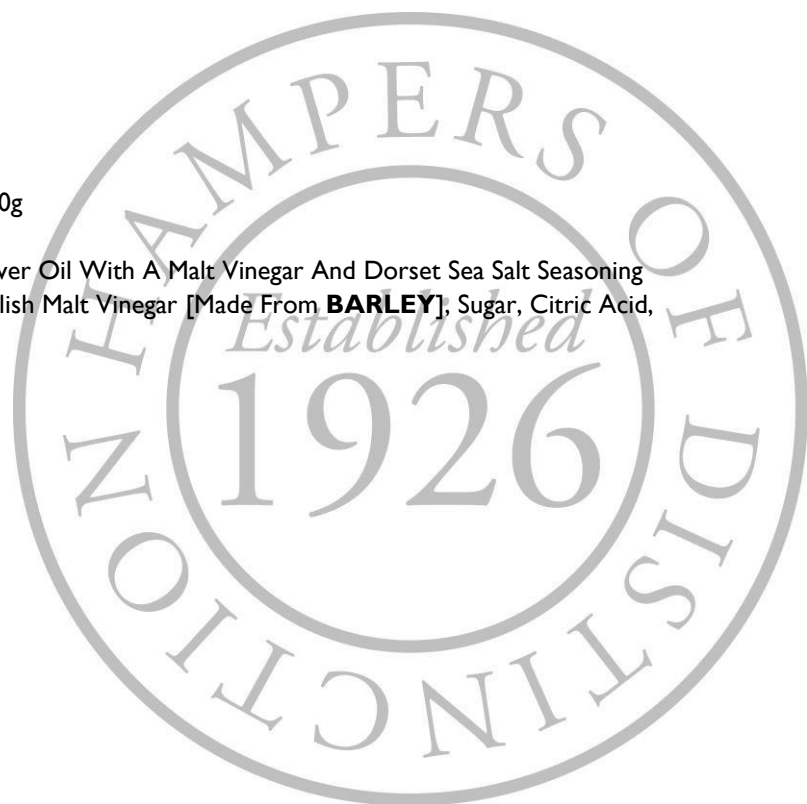
Allergens: For allergens, see ingredients in **CAPITALS**.

Storage: Store in a cool, dry place.

Typical Value per 100g

Energy (kj):	1948
Energy (kcal):	466.2
Fat (g):	25.4
Fat of which saturates (g):	2.2
Carbohydrate (g):	52.8
Carbohydrate of which sugars (g):	1.3
Protein (g):	5.1
Salt (g):	1.5

Product Name: Mr Filbert's Black Truffle and Sea Salt 35g



Ingredients: Roasted Mixed **NUTS** 96%, (**PEANUTS** [58%], **CASHEWS** [25%], **ALMONDS** [17%]), Black Truffle Salt 2% (Sea Salt, Black Summer Truffles [1%], Black Truffle Flavourings [2%]), Sugar, Natural Flavouring, Truffle Oil <1% (Sunflower Oil [98%], White Truffle Flavourings [2%]).

Allergens: For allergens, see ingredients in **CAPITALS**.

Storage: Store in a cool, dry place.

Typical Value per 100g

Energy (kj):	2452
Energy (kcal):	592
Fat (g):	47
Fat of which saturates (g):	6.2
Carbohydrate (g):	8.6
Carbohydrate of which sugars (g):	6.5
Protein (g):	29.1
Salt (g):	1.4

Product Name: Cartwright & Butler Classic Earl Grey 30g

Ingredients: Black Tea, Bergamot Flavour.

Allergens: For allergens, see ingredients in **CAPITALS**.

Storage: Store in a cool, dry place.

Typical Value per 100g

Energy (kj):	N/A
Energy (kcal):	N/A
Fat (g):	N/A
Fat of which saturates (g):	N/A
Carbohydrate (g):	N/A
Carbohydrate of which sugars (g):	N/A
Protein (g):	N/A
Salt (g):	N/A

Product Name: Original Cake Co. Iced Christmas Cake Mini Square

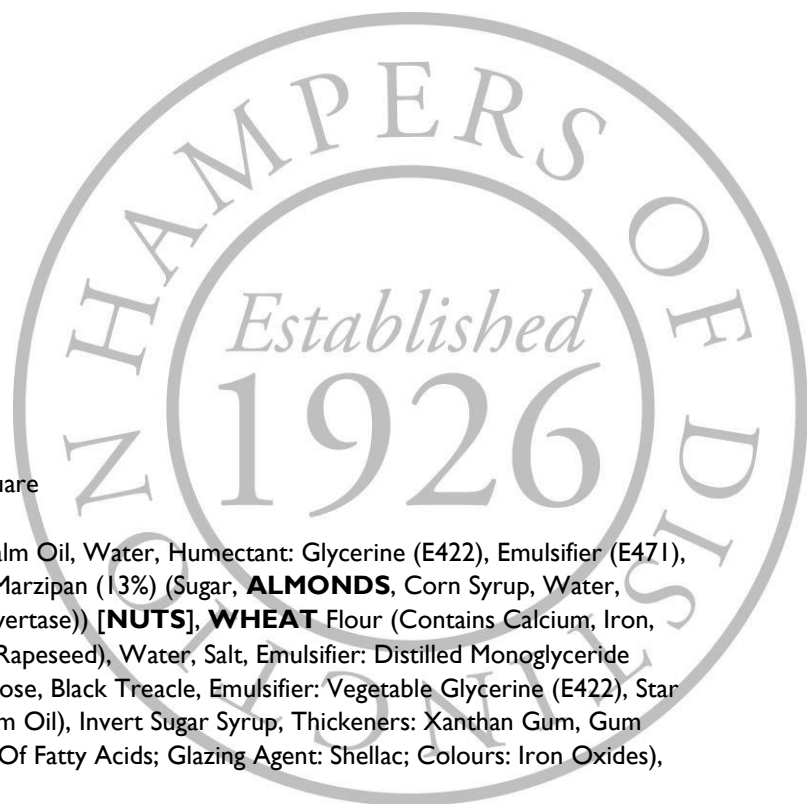
Ingredients: Sultanas (41%), Icing (13%) (Sugar, Glucose Syrup, Palm Oil, Water, Humectant: Glycerine (E422), Emulsifier (E471), Stabiliser (E466), Preservative (E202), Flavouring, Colour (E171)), Marzipan (13%) (Sugar, **ALMONDS**, Corn Syrup, Water, Sorbitol (E420), Preservative E202, Thickener (E401), Stabiliser (Invertase)) [**NUTS**], **WHEAT** Flour (Contains Calcium, Iron, Niacin, Thiamine), Sugar, **EGG**, Margarine (Vegetable Oil (Palm & Rapeseed), Water, Salt, Emulsifier: Distilled Monoglyceride (E471), Flavouring, Colouring (E160b, E100)), Butter [**MILK**], Glucose, Black Treacle, Emulsifier: Vegetable Glycerine (E422), Star Decoration (Sugar, Glucose Syrup, Vegetable Fat (Palm Kernel, Palm Oil), Invert Sugar Syrup, Thickeners: Xanthan Gum, Gum Arabic; Humectant: Glycerol; Emulsifier: Mono - And Diglycerides Of Fatty Acids; Glazing Agent: Shellac; Colours: Iron Oxides), Caramel Colour E150c, Raising Agents: E500, E450 [**WHEAT**].

Allergens: For allergens, see ingredients in **CAPITALS**.

Storage: Store in a cool, dry place out of direct sunlight.

Typical Value per 100g

Energy (kj):	1626
---------------------	------



Energy (kcal):	386
Fat (g):	9
Fat of which saturates (g):	3.8
Carbohydrate (g):	71
Carbohydrate of which sugars (g):	61
Protein (g):	4
Salt (g):	0.17

Product Name: Bon Bon's Toffee Bonbons 168g

Ingredients: Sugar, Glucose Syrup, Vegetable Fats (Palm MB, Coconut), Skimmed **MILK** Powder, Maltodextrin, Salt, Flavouring, Emulsifier: E473.

Allergens: For allergens, see ingredients in **CAPITALS**. May contain traces of **NUTS** and **PEANUTS**.

Storage: Store in a cool, dry place.

Typical Value per 100g

Energy (kj):	1660
Energy (kcal):	392
Fat (g):	4.3
Fat of which saturates (g):	4
Carbohydrate (g):	88
Carbohydrate of which sugars (g):	68
Protein (g):	0.6
Salt (g):	0.55

Product Name: Grandma Wild's Pepper & Poppy Seeds Biscuits 130g

Ingredients: **WHEAT** Flour (**WHEAT** Flour, Calcium Carbonate, Iron, Niacin, Thiamin), Vegetable Oil (Palm Oil), Oatmeal (13%), Water, Poppy Seeds (7%), Sugar, Salt, Black Pepper, Raising Agents: Disodium Diphosphate, Sodium Bicarbonate.

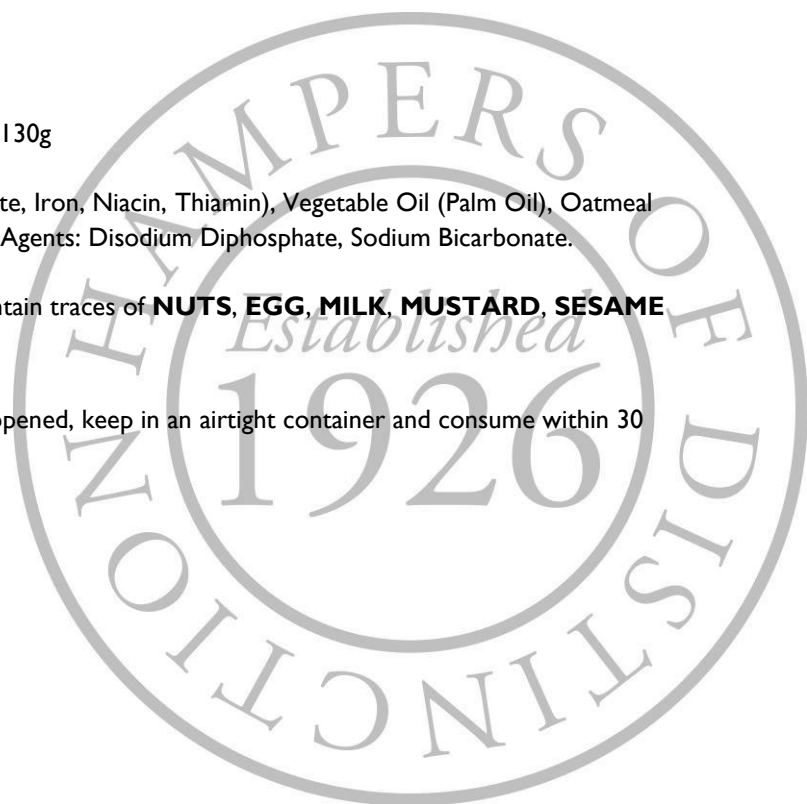
Allergens: For allergens, see ingredients in **CAPITALS**. May contain traces of **NUTS, EGG, MILK, MUSTARD, SESAME** and **SOYA**.

Storage: Store in a cool dry place avoiding direct sunlight. Once opened, keep in an airtight container and consume within 30 days.

Typical Value per 100g

Energy (kj):	2009
Energy (kcal):	481
Fat (g):	25
Fat of which saturates (g):	10
Carbohydrate (g):	53
Carbohydrate of which sugars (g):	4
Protein (g):	9
Salt (g):	1.96

Product Name: Reids White Chocolate & Hazelnut Shortbread 150g



Ingredients: **WHEAT** Flour (**WHEAT** Flour, Calcium Carbonate, Iron, Niacin, Thiamin), Butter (**MILK**, Salt), Sugar, White Chocolate Chips (6%) (Sugar, Cocoa Butter, Whole **MILK** Powder, Whey Powder [**MILK**], Emulsifier [**SOYA** Lecithin], Vanilla Extract), **HAZELNUTS** (6%), Corn Flour.

Allergens: For allergens, see ingredients in **CAPITALS**. May also contain **NUTS** and **SESAME SEEDS**.

Storage: Store in a cool, dry place and in an airtight container after opening.

Typical Value per 100g

Energy (kj):	2327
Energy (kcal):	557
Fat (g):	32.4
Fat of which saturates (g):	18
Carbohydrate (g):	59.9
Carbohydrate of which sugars (g):	22.6
Protein (g):	5.6
Salt (g):	0.6

