



Gluten	Soya	Peanuts	Nuts	Sesame	Lupin	Milk	Eggs	Sulphites	Celery	Mustard	Fish	Molluscs	Crustacean
Mandatory allergens contains:													
✓	✓	✓	✓			✓	z	✓					
Key													
✓	Listed in ingredients												
z	May contain traces												

Product Name: Nibnibs Sun Dried Tomato Breadsticks 100g

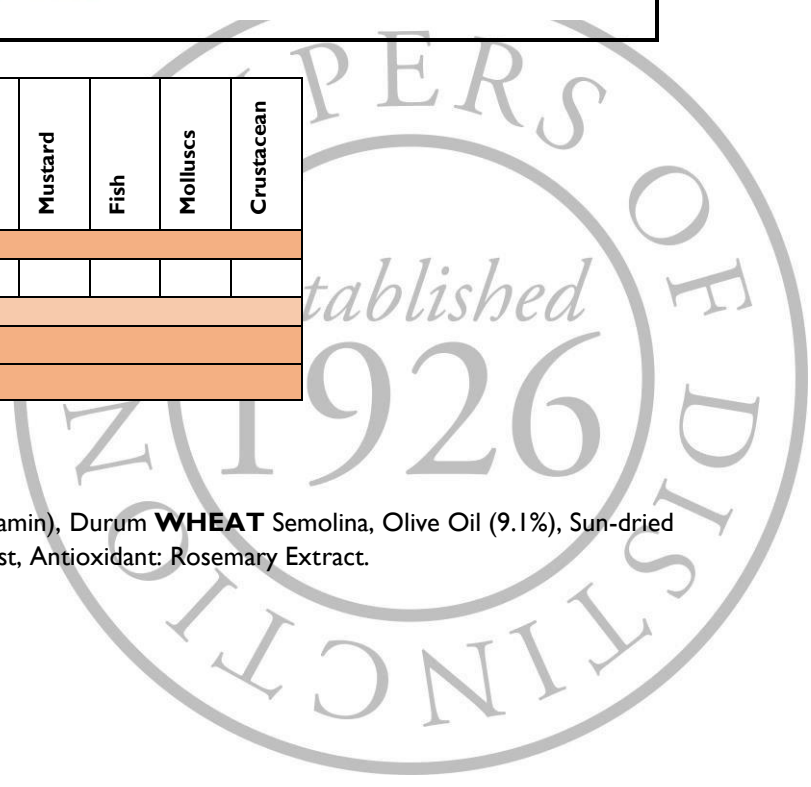
Ingredients: **WHEAT** Flour (contains Calcium, Niacin, Iron, Thiamin), Durum **WHEAT** Semolina, Olive Oil (9.1%), Sun-dried Tomato Granules (6.1%) (Sundried Tomatoes, Salt), Basil, Salt, Yeast, Antioxidant: Rosemary Extract.

Allergens: For allergens, see ingredients in **CAPITALS**.

Storage: Store in a cool, dry place.

Typical Value per 100g

Energy (kj):	1830
Energy (kcal):	434
Fat (g):	11
Fat of which saturates (g):	1.5
Carbohydrate (g):	72
Carbohydrate of which sugars (g):	4



Protein (g):	10
Salt (g):	1.6

Product Name: Mr Filbert's Luxury Coffee & Vanilla Roasted Peanuts 150g

Ingredients: PEANUTS (46%), ALMONDS (23%), Icing Sugar, Salt, Coffee Paste [<1%: Coffee 35%, Sugar, Glucose-Fructose Syrup, Water, Modified Starch, Flavours. Vanilla Extract <1%: Water, Glycerine [Palm Free], Infused Fresh Vanilla Pods.], Dark Chocolate Coffee Beans 15%: [Sugar, Cocoa Mass, Coffee Beans 13%, Cocoa Butter, Whey (**MILK**), Vegetable Fat (Palm SG), Emulsifier: Sunflower Lecithin E322, Glazing Agents: Gum Arabic, Shellac E904], Chocolate Coated Caramel 10%: (**MILK** Chocolate 65% [Sugar, **MILK** Powder, Cocoa Butter, Cocoa Mass, Vegetable Fat [Palm SG}, Whey (**MILK**), Emulsifier: Sunflower Lecithin E322, Glazing Agents: Gum Arabic, Shellac E904. Sea Salt & Caramel Fudge 35%: [Sugar, Glucose, Skimmed Sweetened Condensed **MILK**, Palm Fondant, Sea Salt 1%, Flavouring: Natural

Allergens: For allergens, see ingredients in **CAPITALS**.

Storage: Store in a cool, dry place.

Typical Value per 100g

Energy (kj):	2450
Energy (kcal):	591
Fat (g):	47
Fat of which saturates (g):	7.6
Carbohydrate (g):	16
Carbohydrate of which sugars (g):	16
Protein (g):	23
Salt (g):	1.1

Product Name: Walker's Shortbread Gingerbread Men 125g

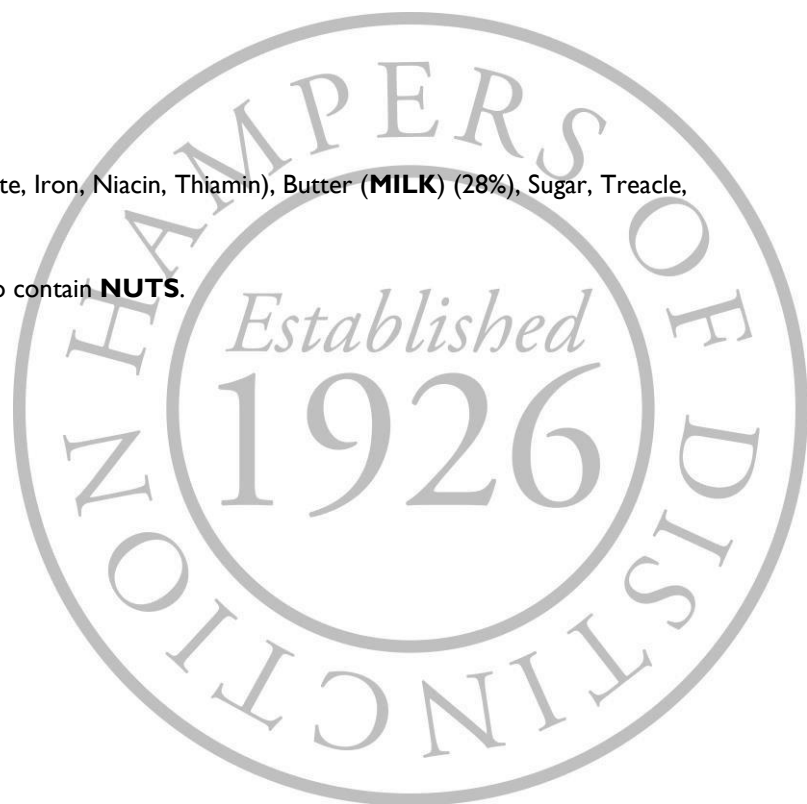
Ingredients: WHEAT Flour (**WHEAT** Flour, Calcium Carbonate, Iron, Niacin, Thiamin), Butter (**MILK**) (28%), Sugar, Treacle, Golden Syrup, Ground Ginger, Raising Agent: Sodium Bicarbonate.

Allergens: For allergens, see ingredients in **CAPITALS**. May also contain **NUTS**.

Storage: Store in a cool, dry place.

Typical Value per 100g

Energy (kj):	2111
Energy (kcal):	504
Fat (g):	25.8
Fat of which saturates (g):	17
Carbohydrate (g):	61.5
Carbohydrate of which sugars (g):	20.1
Protein (g):	5.6
Salt (g):	0.63



Product Name: Love Popcorn Sweet Popcorn 27g

Ingredients: Air Popped Corn, Sugar, Rapeseed Oil.

Allergens: For allergens, see ingredients in **CAPITALS**. Made in an environment where **NUTS, PEANUTS** and **DAIRY** are present.

Storage: Store in a cool, dry place.

Typical Value per 100g

Energy (kj):	2134
Energy (kcal):	507
Fat (g):	21.6
Fat of which saturates (g):	1.8
Carbohydrate (g):	68.6
Carbohydrate of which sugars (g):	30.3
Protein (g):	5.6
Salt (g):	0.1

Product Name: Taste Half Chocolate Dipped Shortbread 150g

Ingredients: Flour (**WHEAT** Flour, Calcium, Niacin, Iron, Thiamin), Vegetable Oils (Sustainable Palm, Rapeseed), Sugar, Dark Chocolate (15%) (Cocoa Mass, Sugar, Cocoa Butter, Emulsifier: **SOYA** Lecithin; Natural Vanilla Flavouring), Raising Agent: Sodium Hydrogen Carbonate.

Allergens: For allergens, see ingredients in **CAPITALS**. Handled in a factory with **MILK, EGG, and TREE NUTS**.

Storage: Store in a cool, dry place out of direct sunlight. Once opened, keep in an airtight container and consume within 2 weeks.

Typical Value per 100g

Energy (kj):	2268
Energy (kcal):	542
Fat (g):	27.9
Fat of which saturates (g):	8.2
Carbohydrate (g):	67.3
Carbohydrate of which sugars (g):	28.1
Protein (g):	4.3
Salt (g):	0.98

Product Name: House of Fudge Christmas Pudding Cracker 75g

Ingredients: Sugar, Glucose Syrup, Sweetened Condensed **MILK**, Refined Vegetable Fat (Palm), Raisins, Glacé Cherries (Cherries, Sugar, Citric Acid (E330), Potassium Sorbate (E202, Erythrosine (E127), **SULPHUR DIOXIDE** (E220)), Butter, Clotted Cream, Rum (contains colour E150a), Natural Flavouring, Emulsifier: **SOYA** Lecithin, Salt.

Allergens: For allergens, see ingredients in **CAPITALS**. May contain traces of **PEANUTS** and **TREE NUTS**.

Storage: Store in a cool, dry place.

Typical Value per 100g

Energy (kj):	1667
Energy (kcal):	396
Fat (g):	12.4
Fat of which saturates (g):	6.7
Carbohydrate (g):	70.3
Carbohydrate of which sugars (g):	58.9
Protein (g):	0.8
Salt (g):	0.19



Product Name: Belgian Chocolate Snowballs 200g

Ingredients: Sugar, Vegetable Fat (Palm), **LACTOSE**, Cocoa Butter, Low Fat **MILK** Powder, Whole **MILK** Powder, Whey Powder (**MILK**), Shredded Coconut, Flavours, Emulsifier: Lecithin's; Vanilla Points 0.02%.

Allergens: For allergens, see ingredients in **CAPITALS**. May also contain traces of **HAZELNUTS**, **CASHEWS** and **NUTS**.

Storage: Store in a cool, dry place.

Typical Value per 100g

Energy (kj):	2373
Energy (kcal):	568
Fat (g):	35.9
Fat of which saturates (g):	22.9
Carbohydrate (g):	55.2
Carbohydrate of which sugars (g):	54.9
Protein (g):	5.8
Salt (g):	0.26

Product Name: Thornton & France Milk Chocolate Christmas Tree 50g

Ingredients: Colombian **MILK** Chocolate (94%) (Sugar, Cocoa Butter, Cocoa Mass, **MILK** Powder, Emulsifier: **SOYA** Lecithin; Flavouring: Natural Vanilla), Snowflake Sugar Sprinkles (4%) (Sugar, Potato Starch, Sunflower Oil, Rice Flour), Red, White And Green Sugar Decorations (2%) (Sugar, **WHEAT** Starch, Glucose Syrup, Colouring Food: Concentrate Of Radish, Lemon, Blackcurrant; Vegetable Oil: Coconut; Glazing Agent: Beeswax; Colours: E100, E131). **MILK** Chocolate contains Cocoa Solids 41% Minimum, **MILK** Solids 19% Minimum).

Allergens: For allergens, see ingredients in **CAPITALS**. May contain traces of **NUTS**, **PEANUTS** and **EGG**.

Storage: Keep out of direct sunlight. Store in a cool, dry place.

Typical Value per 100g

Energy (kj):	2352
Energy (kcal):	562
Fat (g):	37
Fat of which saturates (g):	22
Carbohydrate (g):	54
Carbohydrate of which sugars (g):	49
Protein (g):	7
Salt (g):	0.17

Product Name: Snow Mallows 175g

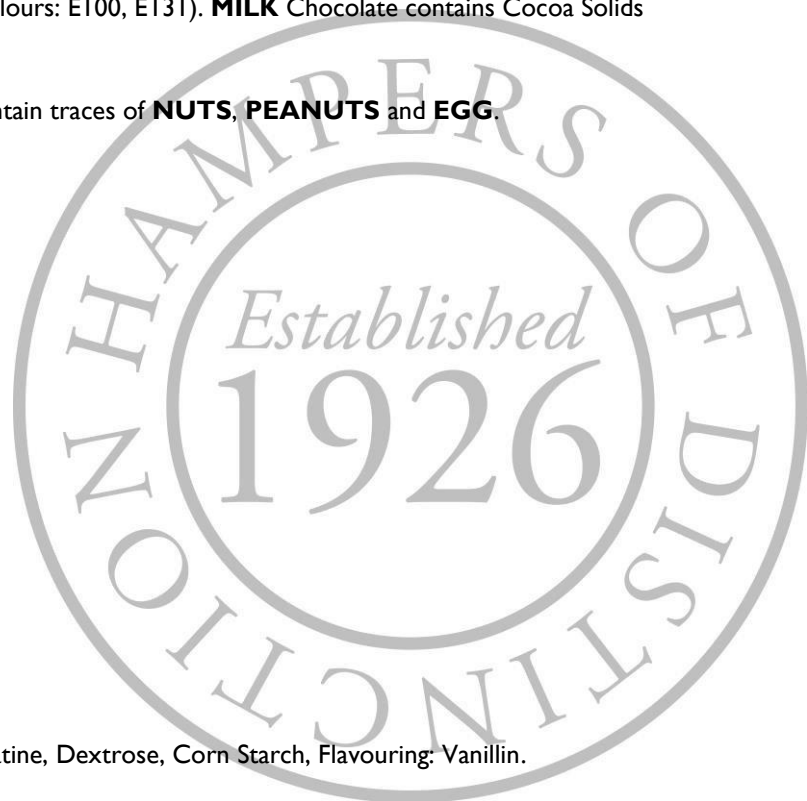
Ingredients: Glucose-Fructose Syrup, Sugar, Water, Porcine Gelatine, Dextrose, Corn Starch, Flavouring: Vanillin.

Allergens: For allergens, see ingredients in **CAPITALS**. May contain traces of **MILK** and **SOY**.

Storage: Store in a cool, dry place.

Typical Value per 100g

Energy (kj):	1418
Energy (kcal):	339



Fat (g):	0.5
Fat of which saturates (g):	0.1
Carbohydrate (g):	79
Carbohydrate of which sugars (g):	69
Protein (g):	3.1
Salt (g):	0.006

Product Name: Bon Bon's Sherbet Strawberries 210g

Ingredients: Sugar, Glucose Syrup, **SULPHITES**, Citric Acid, Sodium Bicarbonate, Tartaric Acid, Sunflower Oil, Flavouring, Colour: E163.

Allergens: For allergens, see ingredients in **CAPITALS**.

Storage: Store in a cool, dry place.

Typical Value per 100g

Energy (kj):	1714
Energy (kcal):	401
Fat (g):	0.6
Fat of which saturates (g):	0.4
Carbohydrate (g):	99
Carbohydrate of which sugars (g):	69
Protein (g):	<0.5
Salt (g):	0.36

Product Name: Van Roy Strawberry Creams 90g

Ingredients: Fondant 63% (Sugar, Glucose Syrup, Water), Dark Chocolate 36% (Cocoa Mass, Sugar, Cocoa Butter, Emulsifier: **SOYA** Lecithin), Strawberry Flavour, Colour: Beetroot Extract, Stabiliser: Invertase. Dark Chocolate contains: Cocoa Solids 55% minimum.

Allergens: For allergens, see ingredients in **CAPITALS**. May contain **MILK** and **NUTS**.

Storage: Store in a cool, dry place away from direct sunlight.

Typical Value per 100g

Energy (kj):	1774
Energy (kcal):	422
Fat (g):	12.6
Fat of which saturates (g):	7.7
Carbohydrate (g):	72
Carbohydrate of which sugars (g):	64.7
Protein (g):	3
Salt (g):	0.1

